

Information Security @ ITB

Yudi Satria Gondokaryono

Direktur ITB-Korea Cyber Security R&D Center

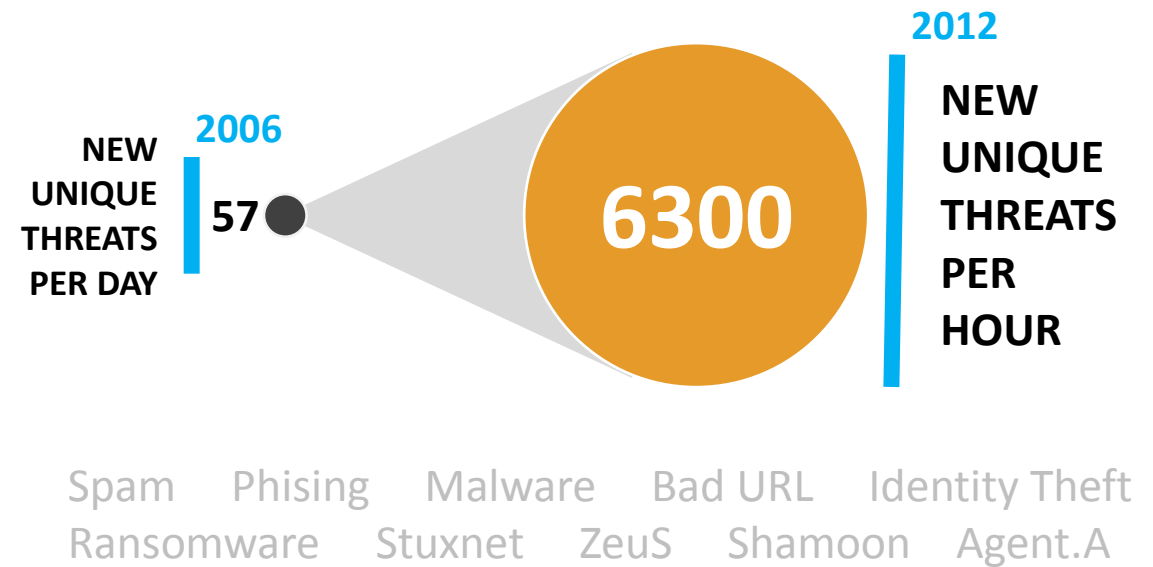


Intro: Security

Pengguna internet di seluruh dunia: lebih dari **2 Milyar***
Hampir semua device terhubung ke internet



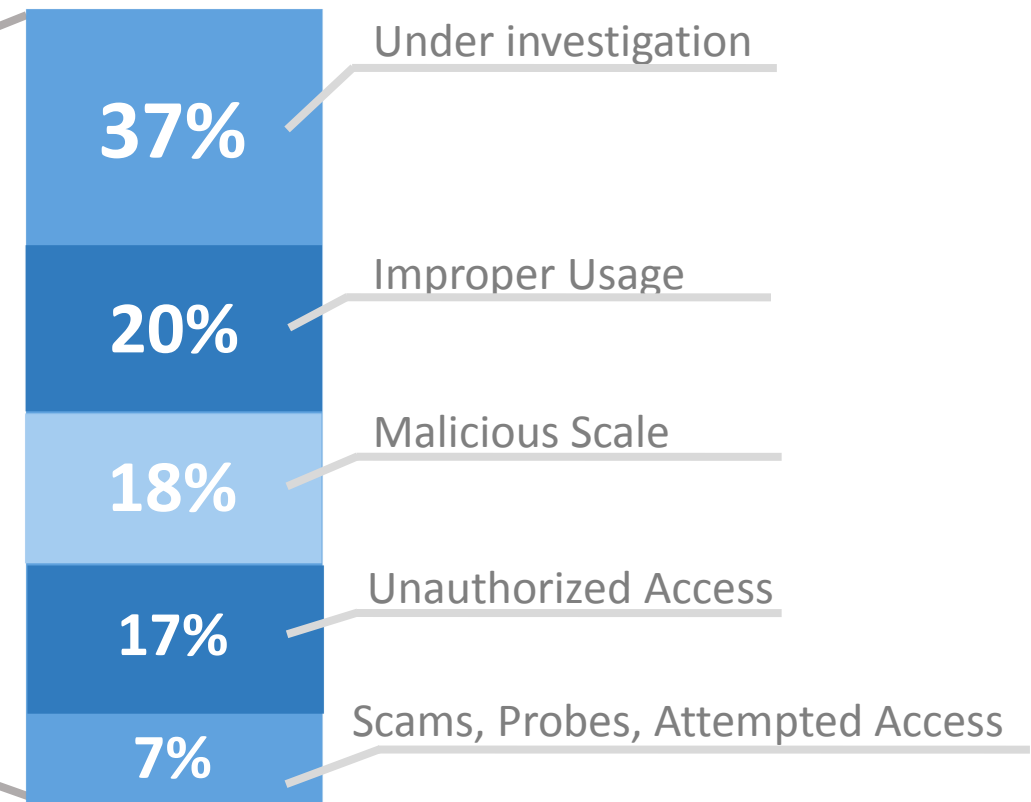
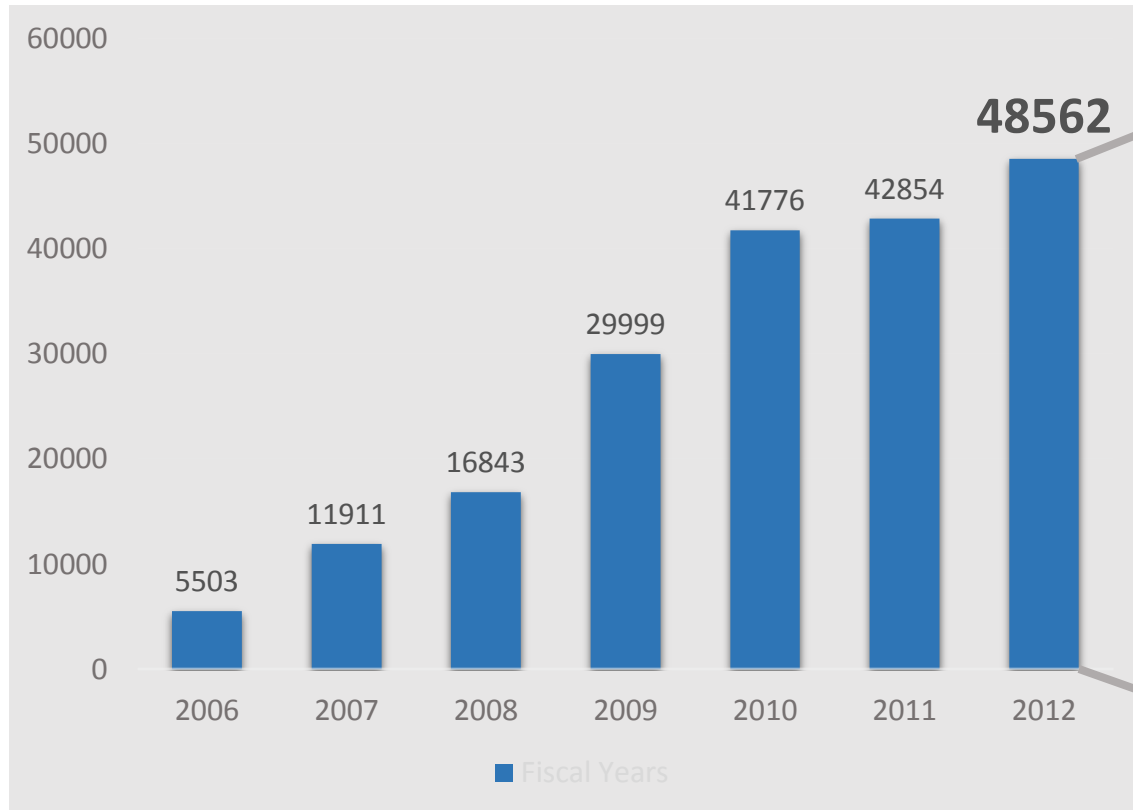
Kemudian muncul berbagai *security threats* dengan tren yang meningkat tajam tiap tahunnya.



* sumber: <http://www.thecultureist.com/2013/05/09/how-many-people-use-the-internet-more-than-2-billion-infographic/>

Intro: Security

Number of Security Incidents Reported to US-CERT Fiscal Years 2006-2012 From Federal Agencies



What do the attackers take?



1. Payment card numbers/data
2. Authentication credential
3. Copyrighted material
4. Medical records
5. Classified information
6. Bank account details
7. Personal information
8. System information
9. Sensitive organizational data
10. Trade secrets

Average cost to **a small-bussiness** from cyber attack is **\$ 188,242**

Strategi Ketahanan Cyberspace Nasional

- ***Tujuan strategi nasional cyberspace***

“Menjamin ketahanan informasi dan sistem pendukungnya dalam rangka menyelesaikan permasalahan strategis bangsa dan meningkatkan **kualitas kehidupan** bangsa Indonesia”



Permasalahan Dunia Siber

	Prioritas 1	Prioritas 2	Prioritas 3	Prioritas 4	Prioritas 5	Prioritas 6
Pengguna alat komunikasi personal	X	X	X			
Pengguna komputer rumahan / Industri kecil dan menengah	X	X	X	X		
Perusahaan besar (termasuk universitas, korporasi, lembaga pemerintahan)	X	X	X	X	X	X
Sektor atau infrastruktur kritis	X	X	X	X	X	X
Skala nasional	X	X	X	X	X	
Internasional						X

Prioritas 1

Membangun sistem yang menjamin ketersediaan informasi bagi bangsa dan negara

Prioritas 2

Membangun organisasi dan tata kelola sistem penanganan keamanan *cyberspace* nasional

Prioritas 3

Sistem untuk memperkecil kelemahan dan ancaman pada keamanan *cyberspace* nasional

Prioritas 4

Program nasional pendidikan pelatihan tentang kesadaran keamanan *cyberspace*

Prioritas 5

Program nasional pendidikan pelatihan tentang kesadaran keamanan *cyberspace*

Prioritas 6: Kerjasama internasional untuk meningkatkan keamanan sistem *cyberspace*

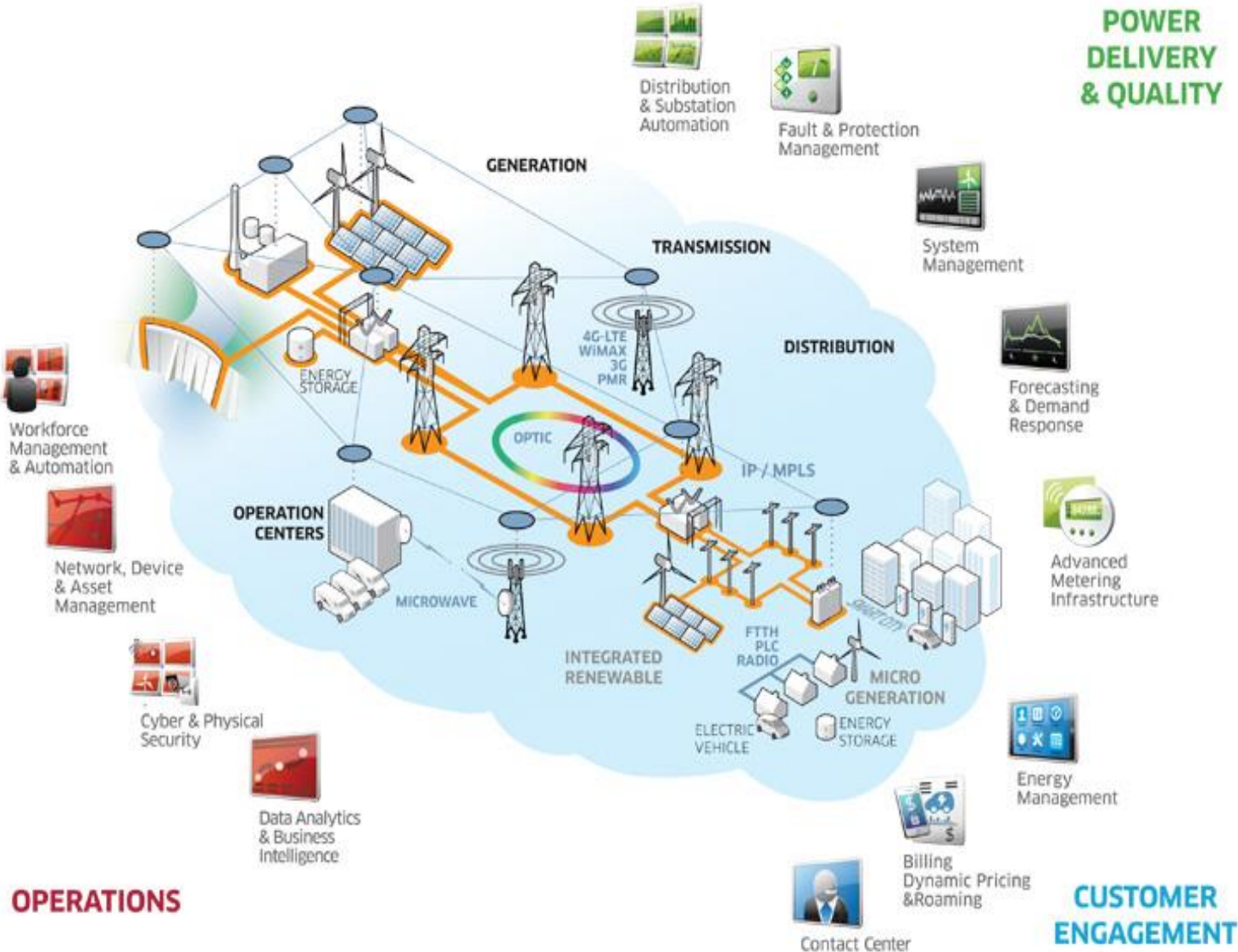
Badan Cyber Nasional

	Civil	Defense	Law Enforcement	Intelligence
1	Kominfo, Kemendagri, Service Provider		Kemenko Polhukam, Polri	
2	Kominfo, Kemendag, Service Provider, BI		Polri	
3	Kominfo, Kemenkeu, BUMN		Polri, Kemenkumham	
4	KEMENDIKBUD	Kemenhan	Kemenhukam	
5	Kemenkes, Kemenhub, Kominfo	TNI, Kemenham		BIN
6	Kominfo	Kemenham, Kemenlu		

Critical Infrastructure

Kementrian	Sektor
Kementrian Komunikasi dan Informatika	Informasi dan Komunikasi (Komersial)
Kementrian Perhubungan, Kementrian Pekerjaan Umum	Transportasi (penerbangan, kereta api, infrastruktur jalan, dll)
Kementrian Kesehatan	Kesehatan
Kementrian Pertanian	Ketahanan Pangan
Kementrian Energi dan Sumber Daya Mineral	Energi dan Sumber Daya Mineral
Kementrian Lingkungan Hidup	Air bersih, Pengolahan limbah
Kementrian Pertahanan	Industri pertahanan
Kementrian Keuangan	Perbankan dan Keuangan
Kementrian BUMN	Industri Strategis (PTDI, PT. PAL, dll)

PLN SmartGrid



**POWER
DELIVERY
& QUALITY**

OPERATIONS

**CUSTOMER
ENGAGEMENT**

ITB Vision on InfoSec

The Best Cyber Security Education & Research Institute in Indonesia

Enhance the response capacity on National Cyber Security of Indonesia

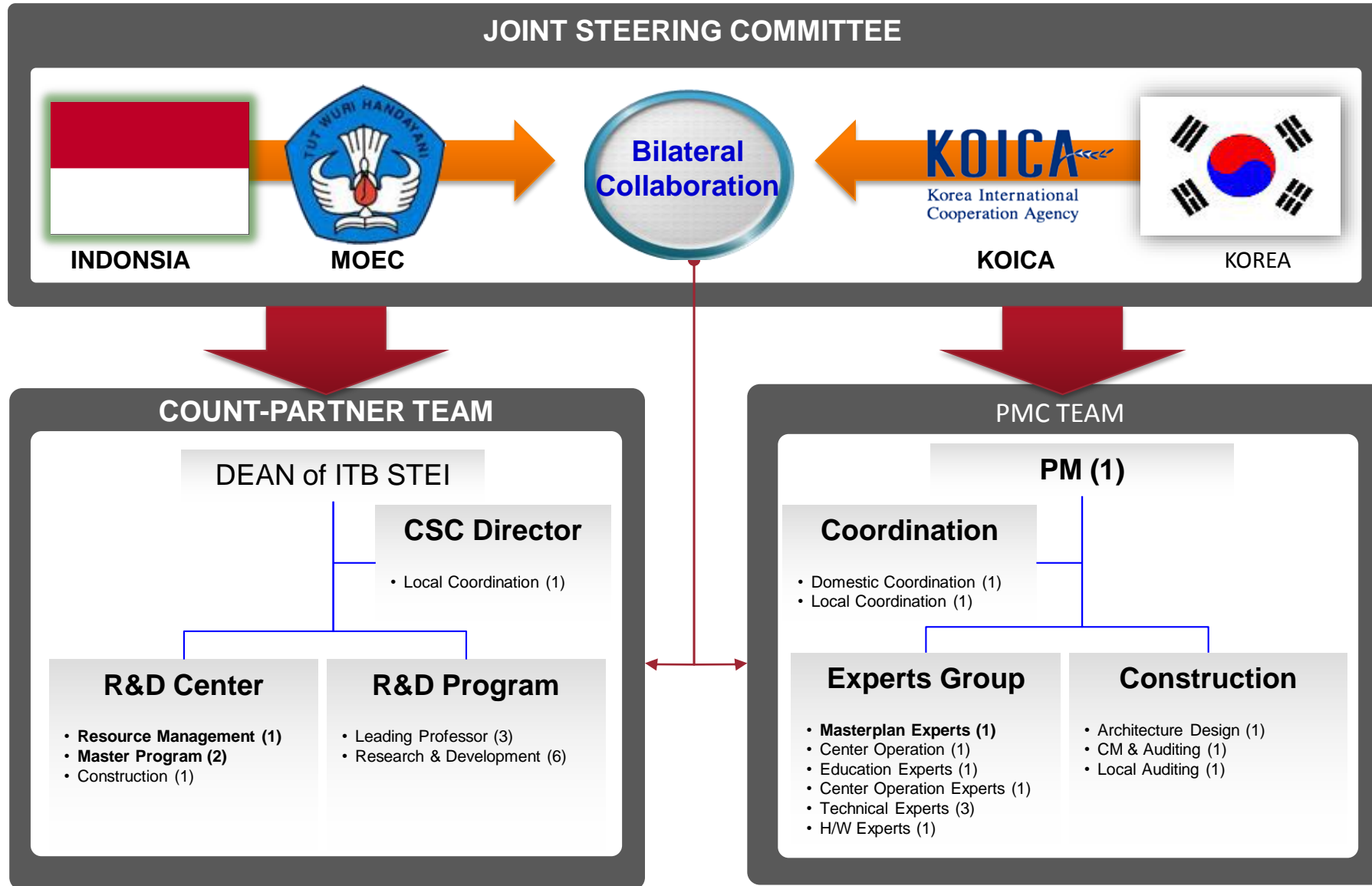


The 1st Cyber Security Graduate School and R&D Center in Indonesia



ITB Cyber Security Center

Organization



ITB CSC Center Construction

Ground Breaking Ceremony (Jan. 30th 2013)



Construction Progress (10th Dec. 2013, Completed)

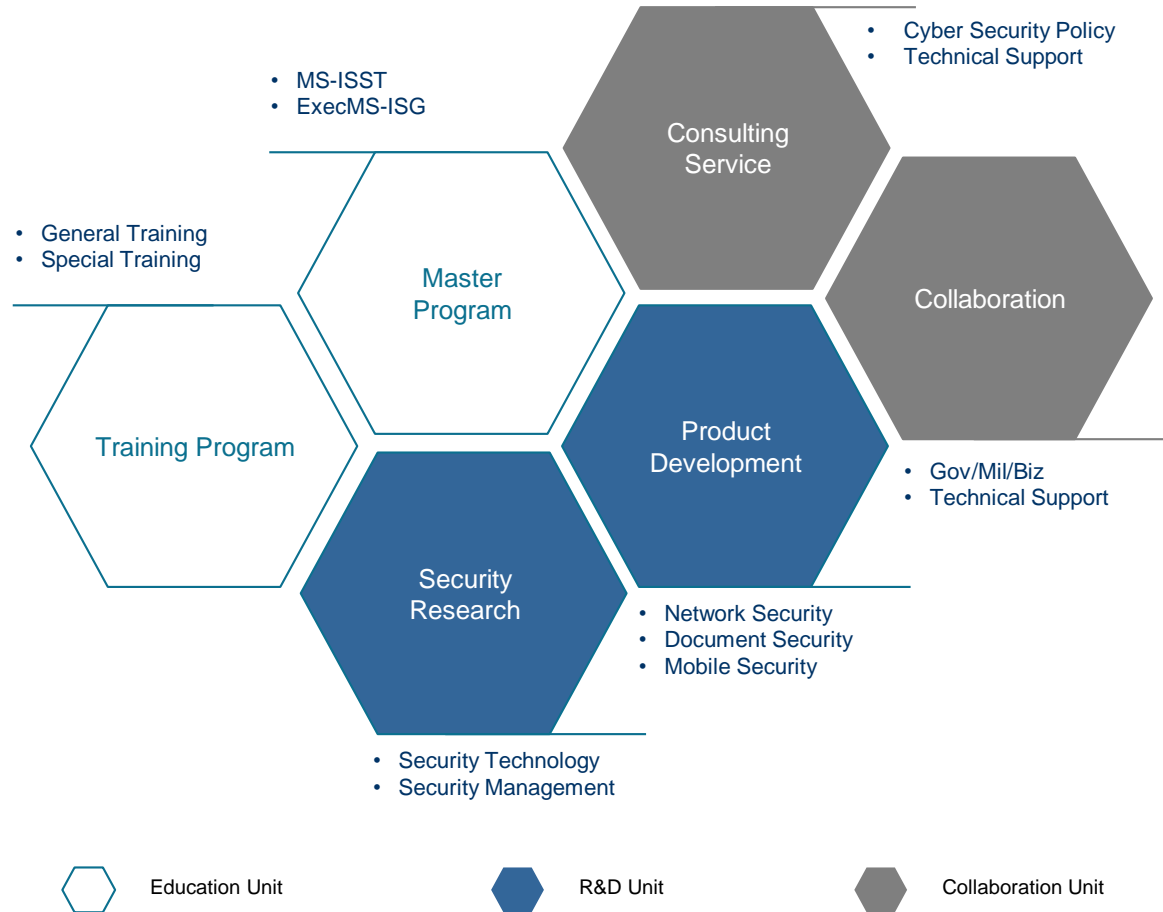


Masterplan

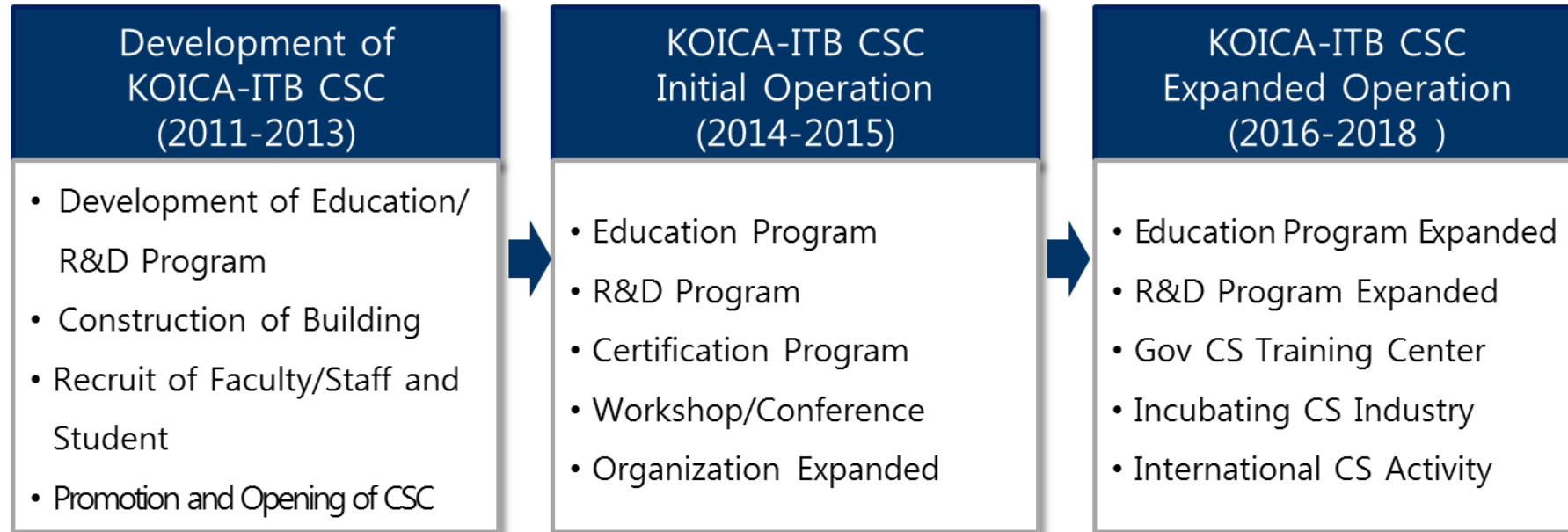
MASTERPLAN ACTIVITIES

- ❑ To provide the education and R&D systems for ITB CSC
- ❑ To provide operational strategy of ITB CSC
 - Organization, Curriculum, R&D Program, Recruiting faculty and Student, Facilities and Equipment
- ❑ To provide core strategy for ITB CSC's sustainability
 - Strategy for financially independent center
 - Promoting and Collaboration
 - Long-term networking strategy

KOICA-ITB CSC SERVICE & PROGRAM - MASTERPLAN SETUP



Roadmap



Sumber Daya Manusia dan Awareness

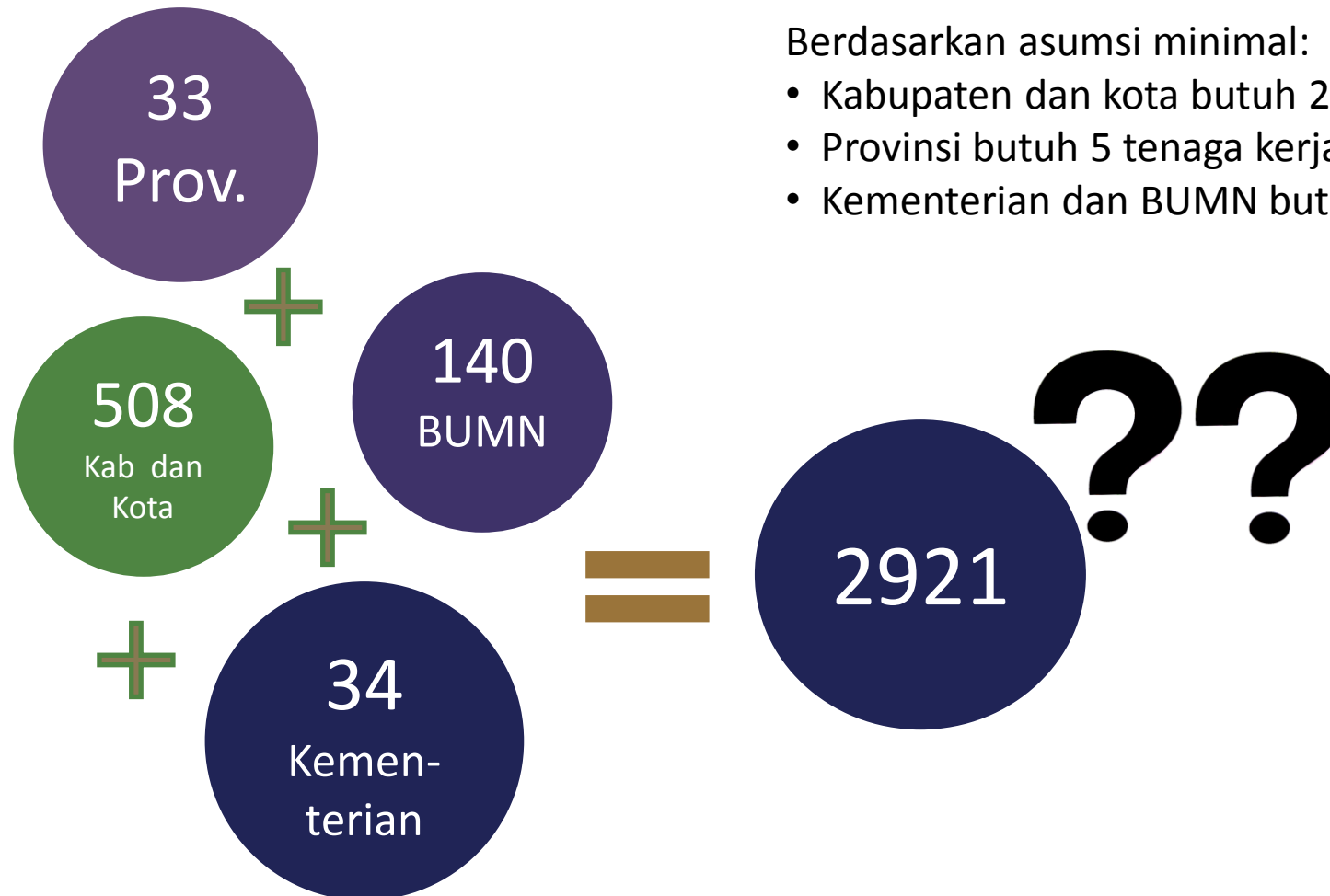
Goal:

- Meningkatkan kesadaran akan resiko beraktifitas di dunia cyber
- Mempersiapkan sumber daya manusia yang capable dalam mendukung keamanan siber nasional
- Mengembangkan dan memelihara *cybersecurity workforce* yang kompetitif dan mampu bersaing secara global

Program peningkatan kapabilitas SDM dalam bidang keamanan siber dapat dibagi ke dalam tiga komponen penting



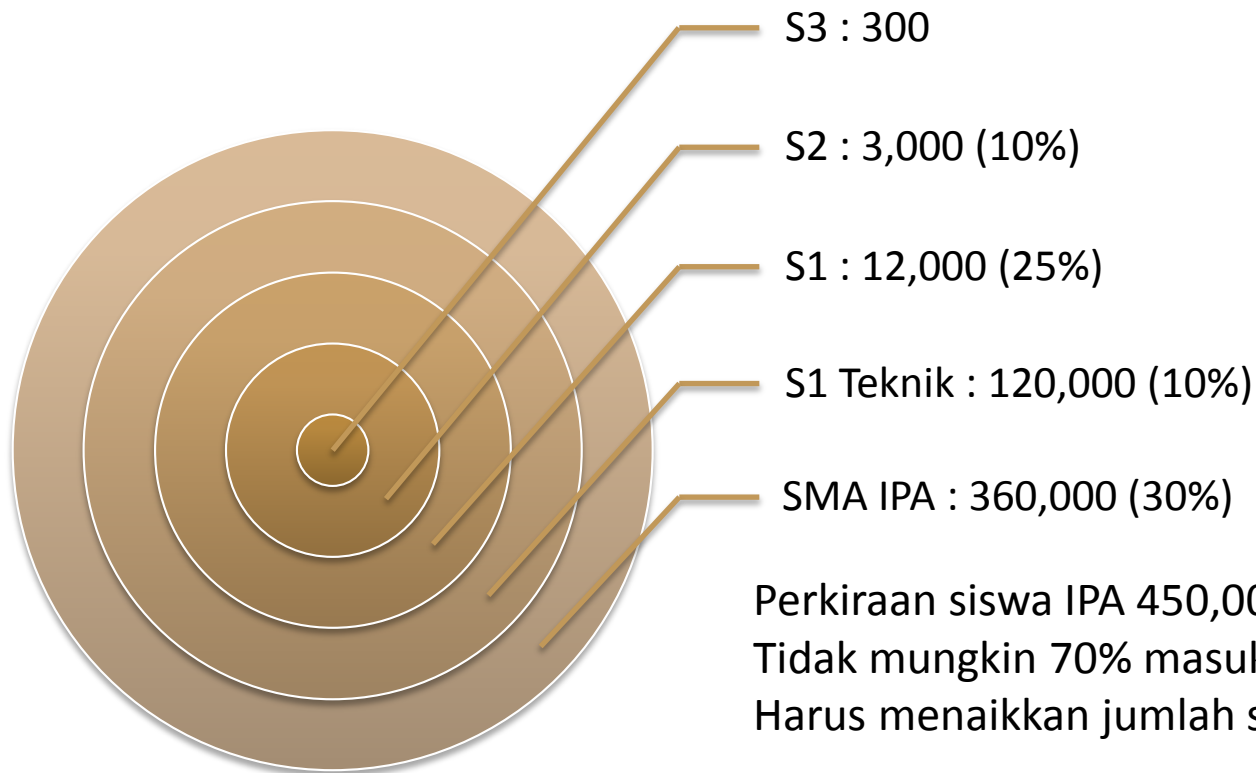
(Contoh) Kebutuhan Tenaga Kerja IT *Security* Indonesia



Berdasarkan asumsi minimal:

- Kabupaten dan kota butuh 2 tenaga kerja
- Provinsi butuh 5 tenaga kerja
- Kementerian dan BUMN butuh 10 tenaga kerja

(Contoh) Kebutuhan Tenaga Kerja IT *Security* Indonesia

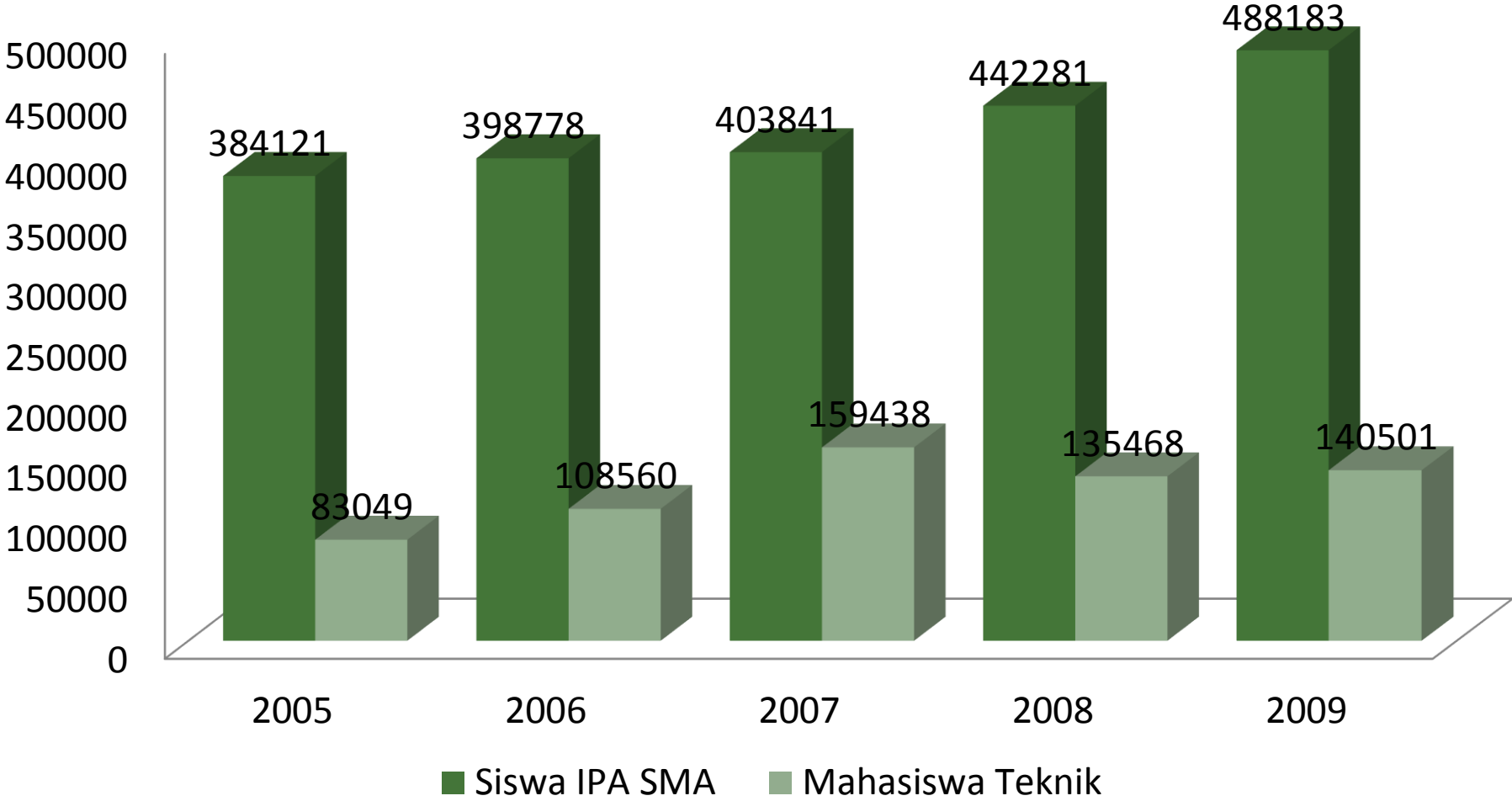


Perkiraan siswa IPA 450,000 per tahun
Tidak mungkin 70% masuk ke satu bidang
Harus menaikkan jumlah siswa IPA + jangka panjang

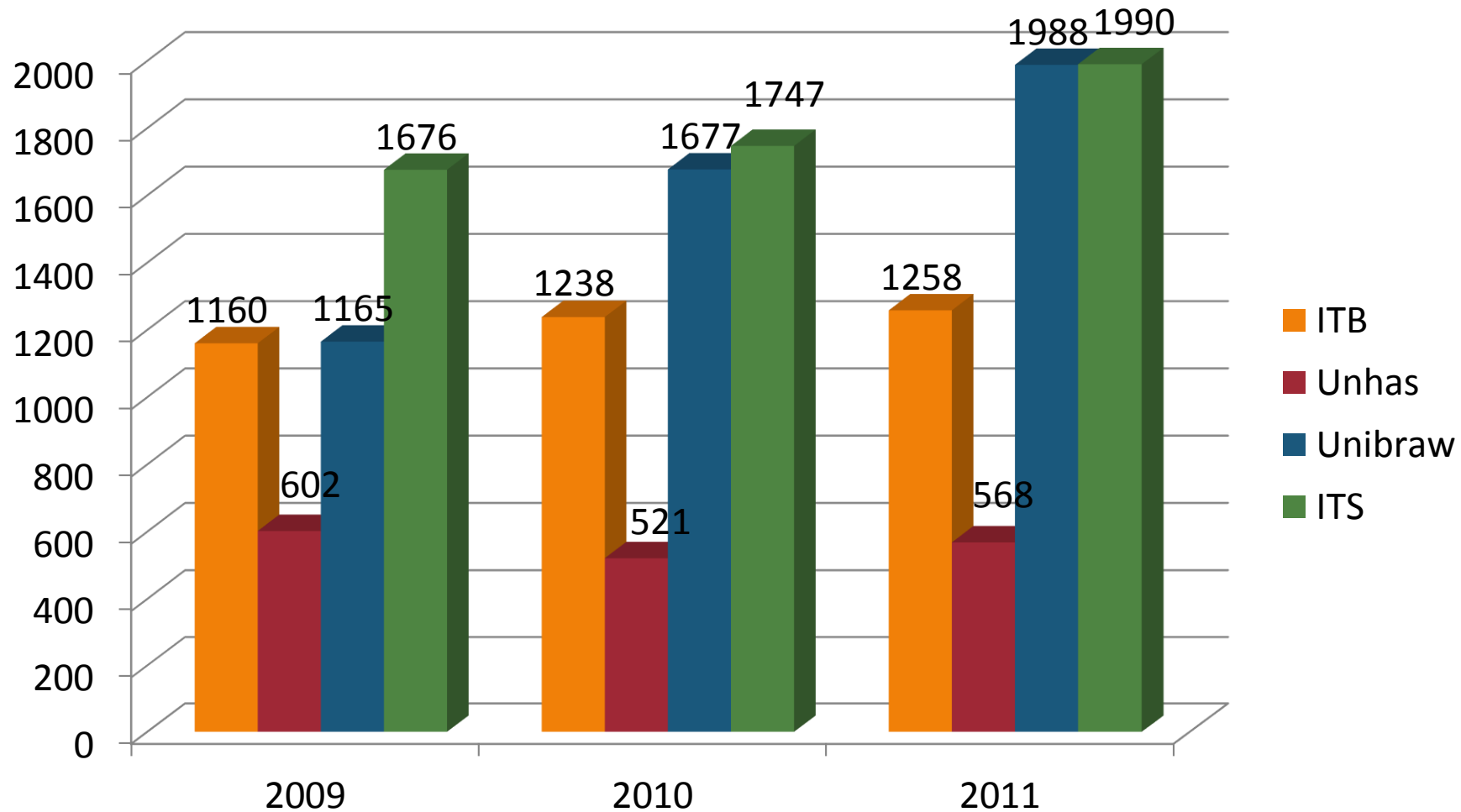
Pengembangan kapabilitas riset dan industri keamanan:

- Berbagai Negara ~ 3000 S3 per bidang
- Indonesia ~ 10% == 300 S3 per bidang

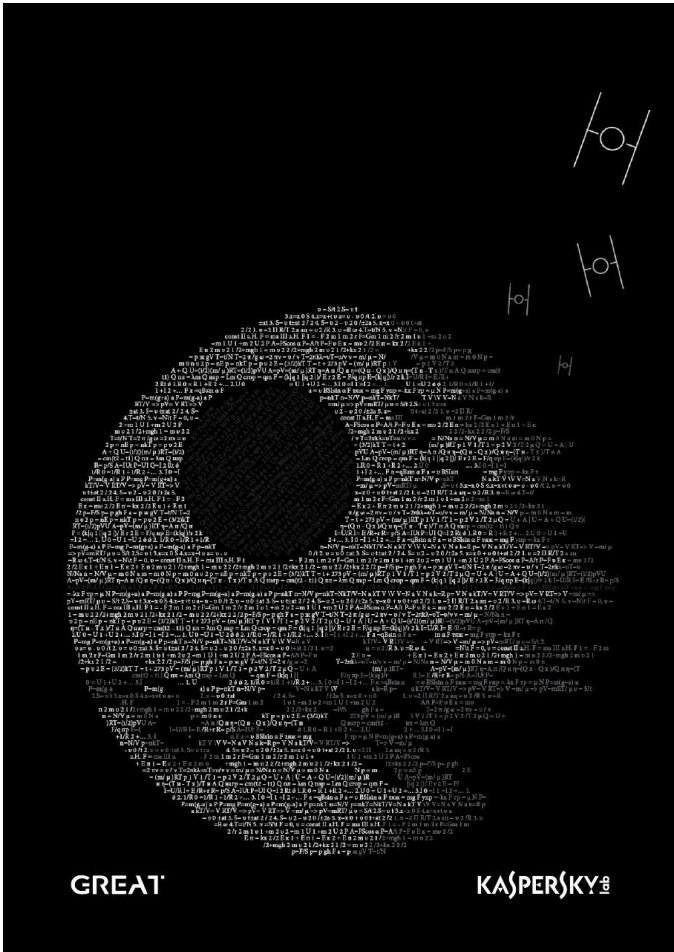
Grafik Beberapa Tahun Terakhir



Jumlah Mahasiswa Baru yang Berhubungan dengan IT Security



Kompetensi SDM ?



Who is the Equation Group?

Kaspersky declined to outright name the United States National Security Agency (NSA) as the governing body behind the Equation Group, but there are a number of factors that point to the NSA as the responsible party.

Read more at <http://observer.com/2015/02/equation-group/#ixzz3XM9qc2B5>

Equation group victims map

- 🏦 Finance
- 🏛️ Diplomatic / Embassies
- ⚡ Energy / Infrastructure
- 🇺🇸 Military
- 📡 Telecommunications
- 🕌 Islamic Scholars
- 👤 Other / Unknown
- 🏠 Government
- 🔬 Research institution
- 🎓 University
- 🚀 Aerospace
- 🏥 Medical
- 📰 Media

High infection rate

- Iran 🏦 🏛️ 🏠 ⚡ 🎓 🇺🇸 📡 🚀 📰
- Russian Federation 🏠 🏛️ ⚡ 🎓 🇺🇸 📡 🚀 📰
- Pakistan 🏠 🏛️ ⚡ 🎓 🇺🇸 📡 🚀 📰
- Afghanistan 🏦 🏛️ 🏠 📡 🚀 📰
- India 🏠 🇺🇸 📡 🚀 📰
- China 🏛️ 🏠 🎓
- Syria 🏛️ 🏠
- Mali 🏠 📡 📰

Medium-level infection rate

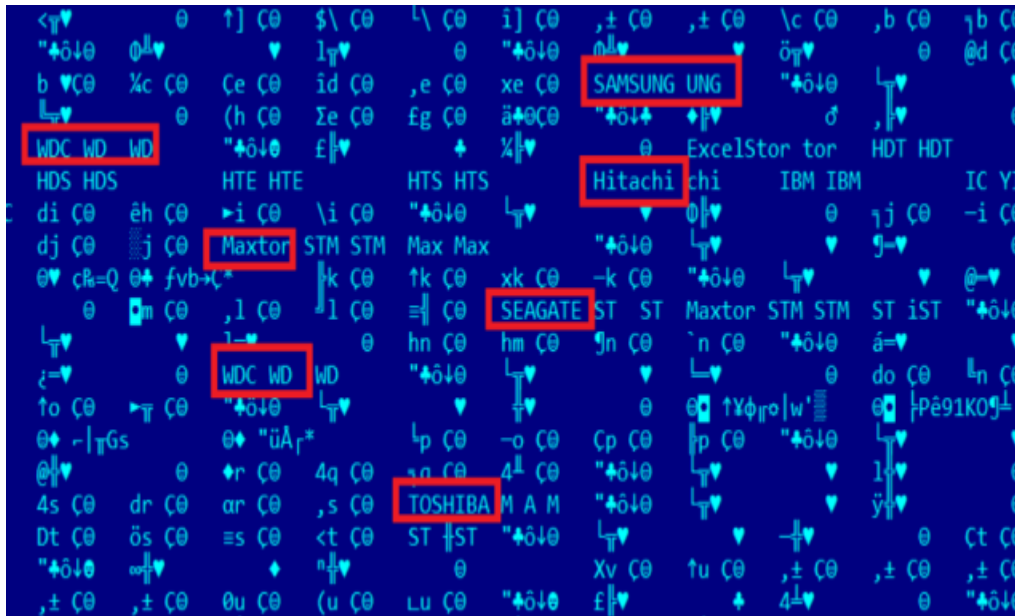
- Lebanon 🏠
- Yemen 📡 🏠
- United Arab Emirates 📡 🏠
- Algeria ⚡ 🏠
- Kenya 🏠 🏠
- United Kingdom 🏦 🕌 🏠
- Libya 🇺🇸 🏠
- Mexico 🏦 🏠 🏠
- Qatar 🏠
- Egypt 🇺🇸 🏠

Low infection rate

- 🏠 Turkey
- 📡 Somalia
- 🏠 Myanmar
- 📡 Germany
- 🏠 South Africa
- 🇺🇸 Nigeria
- 🏠 United States
- 🏠 Venezuela
- 📡 Sudan
- 📡 Palestinian
- 🏠 Morocco
- 🏠 Malaysia
- 📡 Kazakhstan
- 🏦 📡 Iraq
- 📡 Brazil
- 🏠 Uganda
- 🏠 Switzerland
- 🏠 Singapore
- 🏠 Philippines
- 🏠 Peru
- 🏠 France
- 🏠 Ecuador
- 🏦 Belgium
- 🏠 Bahrain



Why are these hackers so frightening than others?



- The first is just how deep their work penetrates a computer system. Kaspersky uncovered Equation Group malware that infiltrates a system's firmware, or the software that loads before your OS even has a chance to boot up.

Apa itu RMKI?

REKAYASA:

- KRIPTOGRAFI DAN APLIKASINYA
- SECURE SOFTWARE & OS SECURITY
- DIGITAL FORENSIC & COMPUTER CRIME, DSB...



MANAJEMEN:

- INFORMATION SECURITY MANAGEMENT
- INFORMATION SYSTEM ASSURANCE
- SECURITY ARCHITECTURE AND DESIGN



VISI

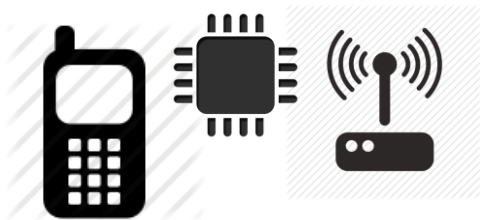
Meningkatkan Sumber Daya Manusia untuk
Menjamin Keamanan Sistem Informasi
Nasional Masa Depan

Output Program RMKI:



Output Program RMKI:

Hardware berbasis security



Software berbasis security

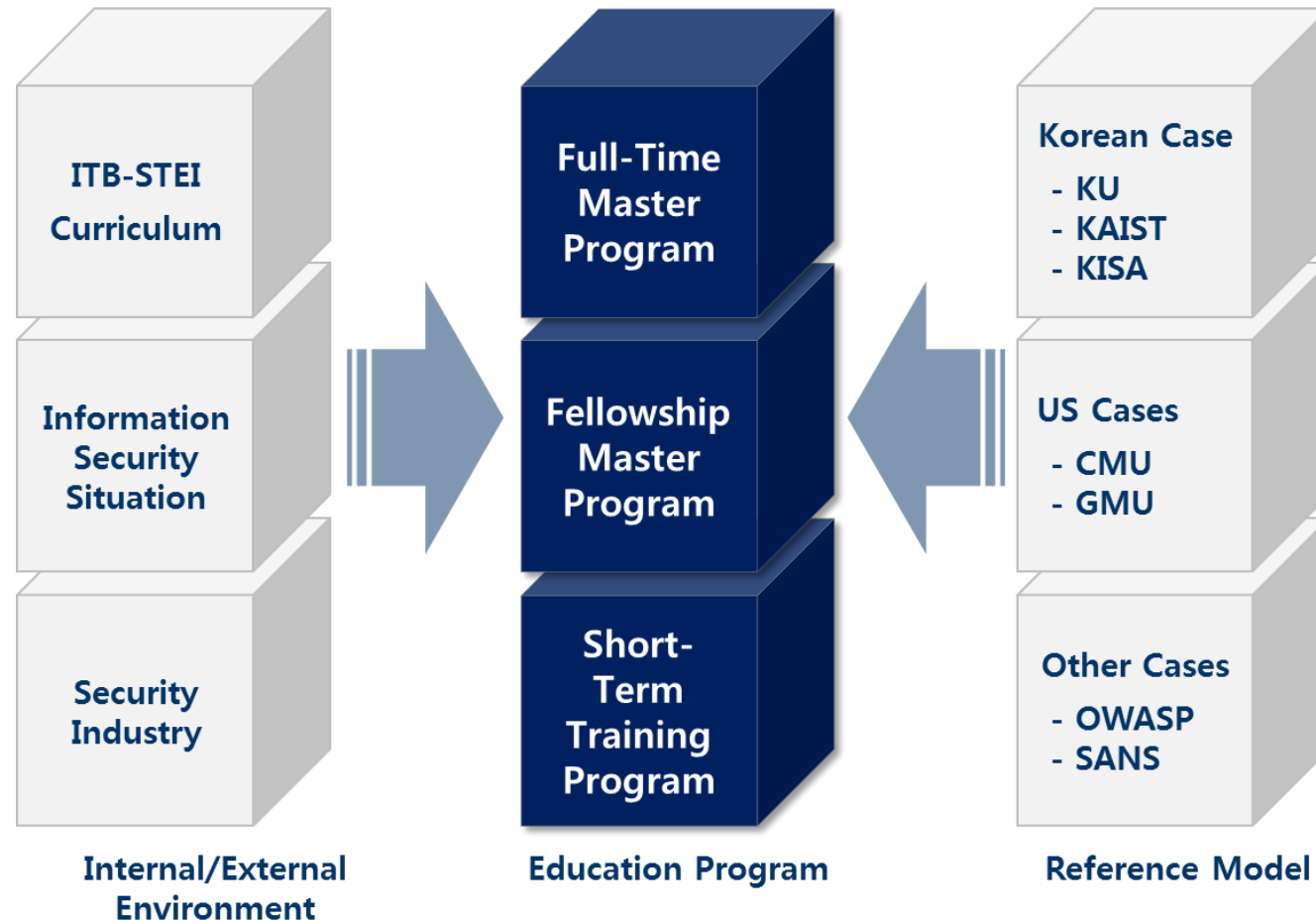


Manajemen berbasis security



Education Program

Bachelor, Masters, Doctoral, Training, Cont. Education





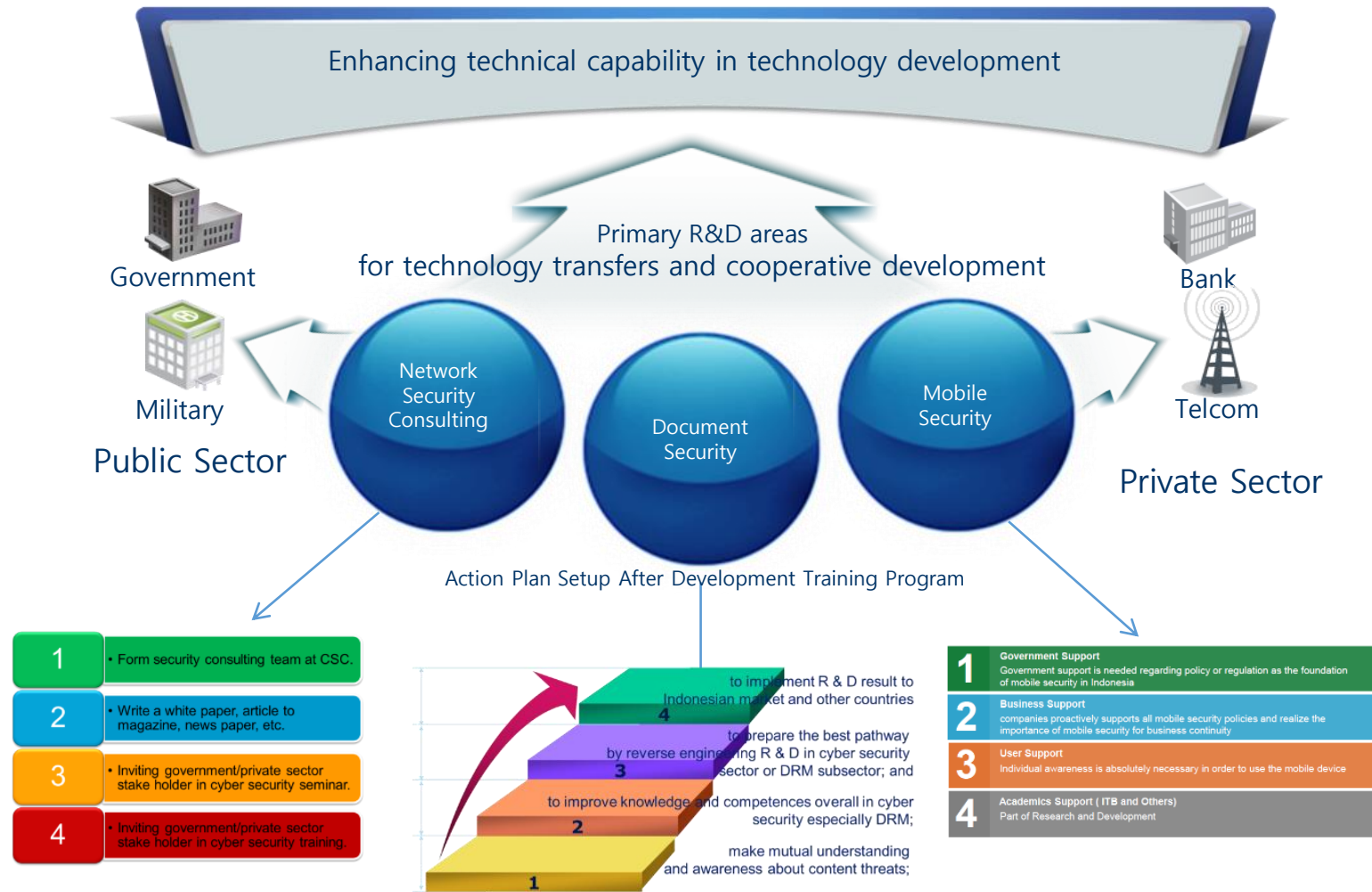
Information Security Engineering & Governance



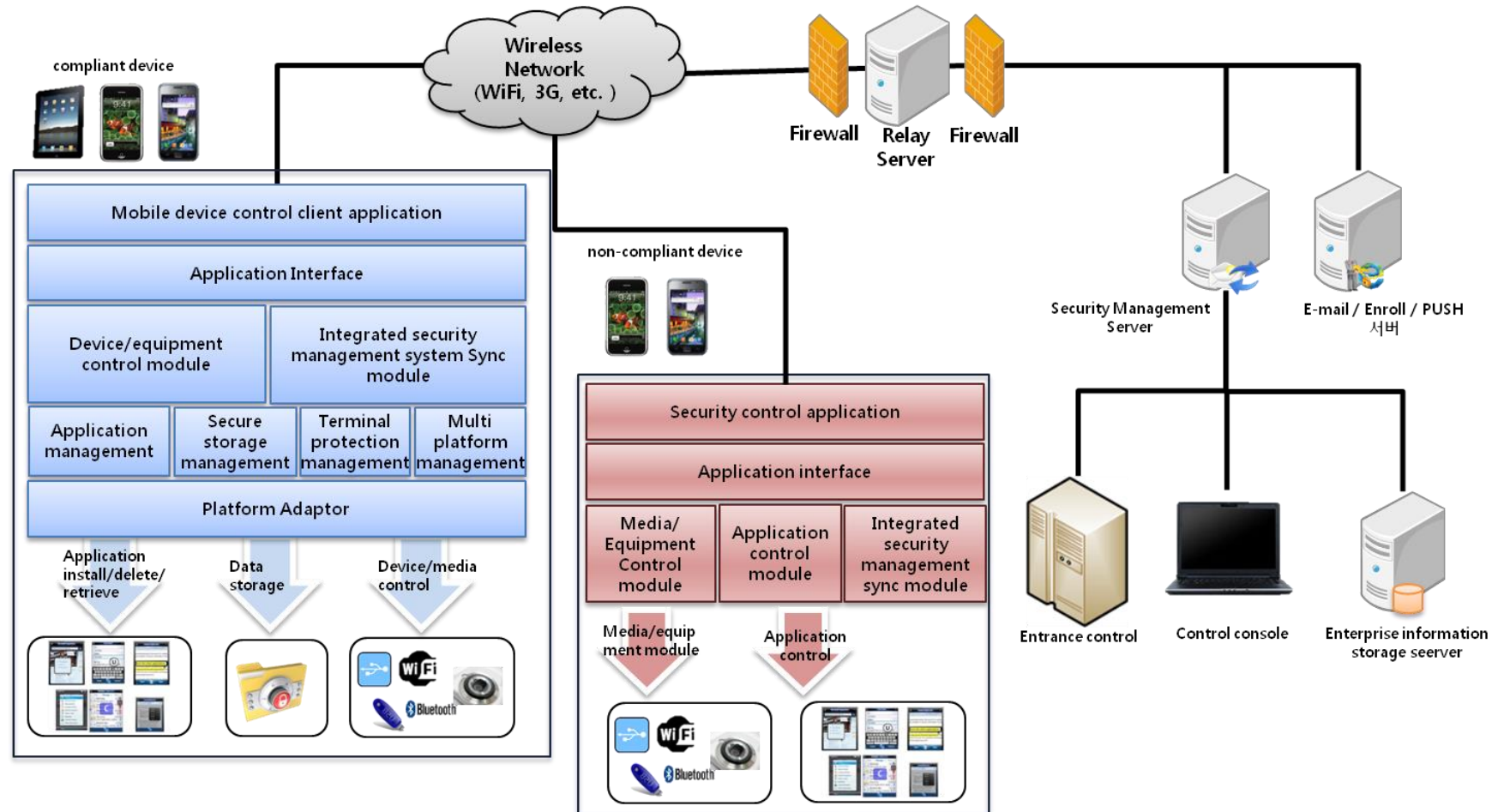
ISO-27002



R&D Program & Development



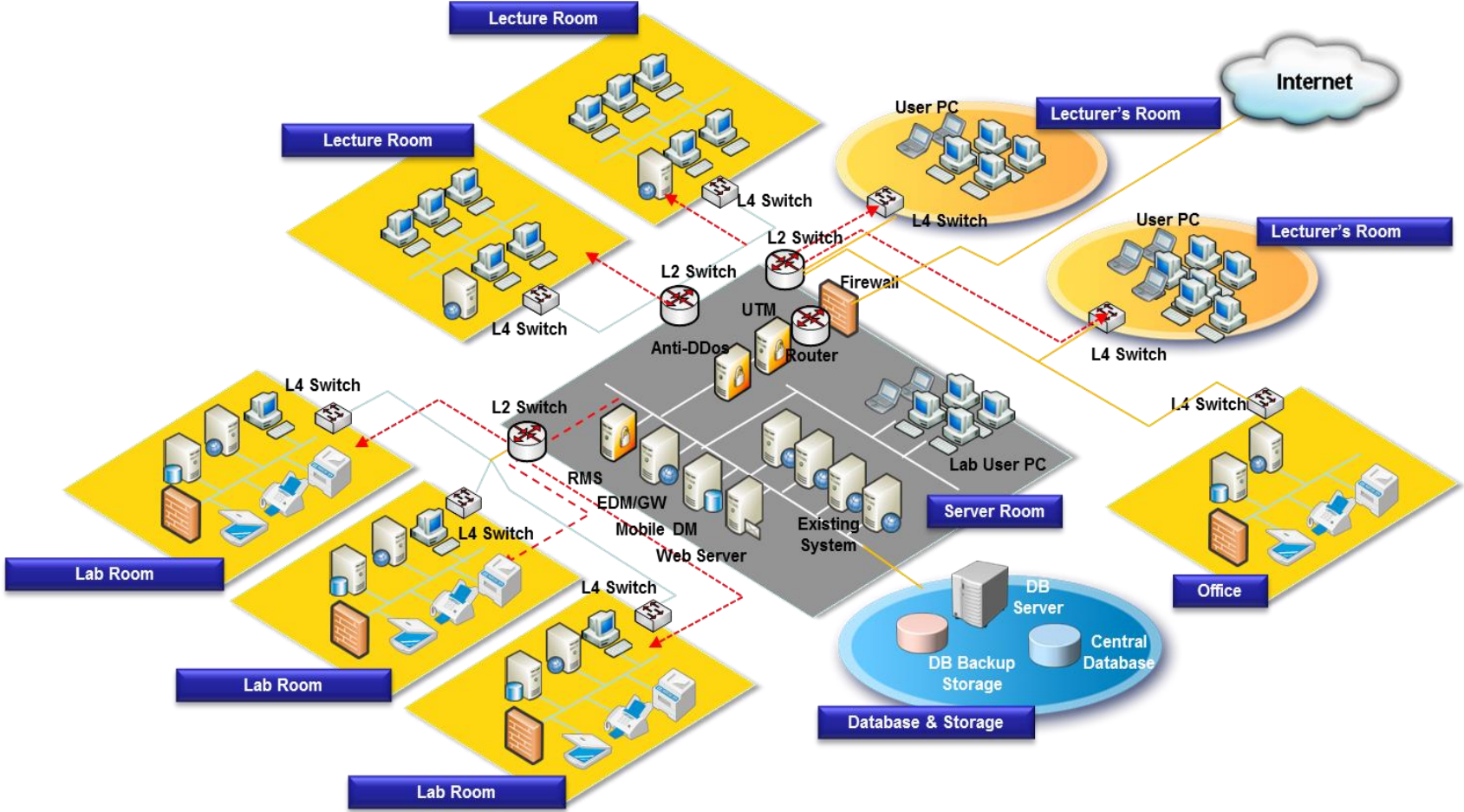
Doctoral Research on Mobile Security



International Research Collaboration

- Processor's Secure Zone & Trusted Computing
- MDM-EISP (Mobile Device Management – Enterprise Internal Secure Platform)
- KOICA-KISA-KR-CERT ITB-INA-CERT
- Cyber Patrol Collaboration
- Asymmetric Persistent Threats
- Hacking and Anti-Hacking Technology
- Cyber Forensic

Equipment



Thank You

