

**ASIA PROFESSIONAL EDUCATION NETWORK CONFERENCE ON
ASIA-AFRICA AERIAL AND OPTICAL SILK ROAD**

**GEDUNG MERDEKA
BANDUNG
INDONESIA
11-12 NOVEMBER
2015**

GLOBAL AEROTROPOLIS NETWORK

**KERTAJATI AIRPORT AS A PART OF
AERIAL SILK ROAD CONNECTING ASIA-AFRICA:
ITS EXPECTED IMPACT ON WEST JAVA REGIONAL DEVELOPMENT**

JOHNNY PATTA

ASSISTANT PROFESSOR ITB

**VICE CHAIRMAN OF THE INITIATORS REPRESENTATIVE COMMITTEE - WEST
JAVA INTERNATIONAL AIRPORT DEVELOPMENT TEAM**

Kepgub jabar no.553.2/kep.952-admrek/2013

**SCHOOL OF ARCHITECTURE, PLANNING, AND POLICY DEVELOPMENT
BANDUNG INSTITUTE OF TECHNOLOGY**

AWAKENING WEST JAVA POTENTIAL

INDONESIA TODAY

- 16th largest economy in the world
- 45 million members of consuming class
- 53% of the population producing 74% of GDP
- 55 million skilled workers
- \$0.5 trillion market opportunity in consumer services, agriculture and fisheries, resources and education

INDONESIA IN 2030

- 7th largest economy in the world
- 135 million members of consuming class
- 71% of the population producing 86% of GDP
- 113 million skilled workers needed
- \$1.8 trillion market opportunity in consumer services.

Source: McKinsey, Unleashing Indonesia's Potential, September 2012

WEST JAVA TODAY

- CONTRIBUTED TO 60% OF INDONESIA'S GDP ON THE INDUSTRIAL MANUFACTURE SECTOR.
- CONTRIBUTED 14.3% OF THE COUNTRY'S GDP.
- THE LOCATION OF 34.6 % OF FOREIGN INVESTMENT
- MOSTLY WITH SKILLED WORKERS CONTRIBUTED TO 20 % OF THE COUNTRY'S TOTAL POPULATION

INTRODUCTION

METROPOLITANS AND
GROWTH CENTERS
IN WEST JAVA PROVINCE

CONCEPT

OF THREE METROPOLITANS AND
THREE GROWTH CENTERS
DEVELOPMENT

EXPECTED IMPACTS

AEROTROPOLIS KERTAJATI
ON
WEST JAVA REGIONAL
DEVELOPMENT

SETTINGS NEEDED:

RULES AND REGULATIONS,
POLITICAL,
INSTITUTIONAL, AND
TECHNICAL

OUTLINE

WEST JAVA PROVINCE

GEOGRAPHY

TOTAL AREA: 3,717,397 HA
CITIES/ REGENCIES: 27

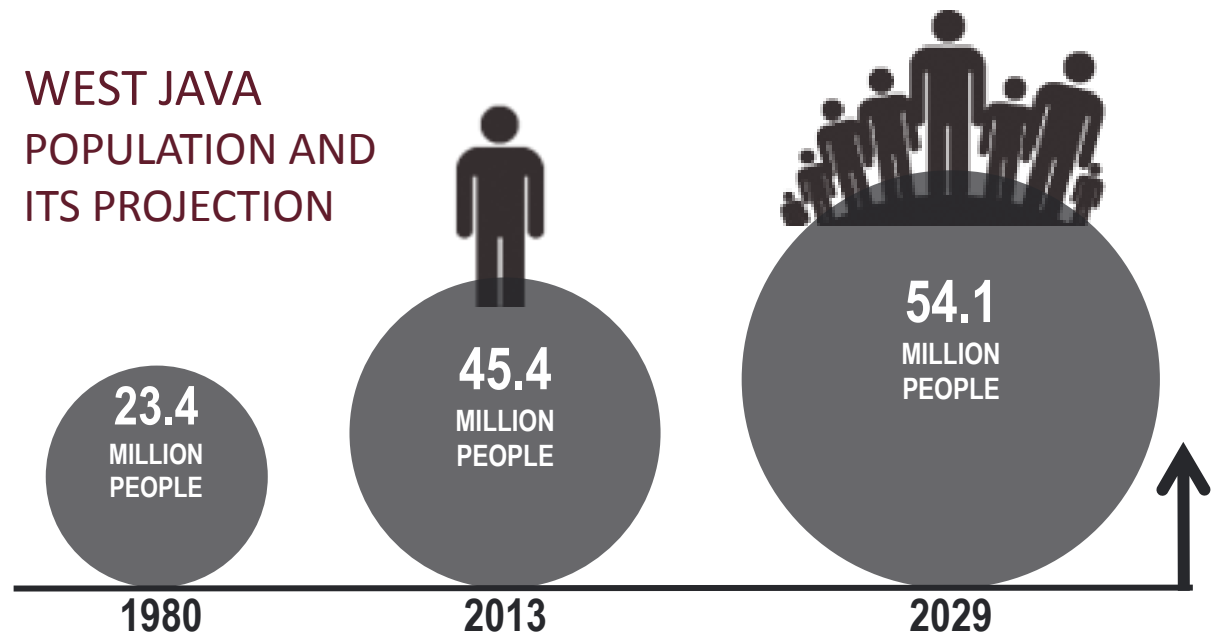
DEMOGRAPHY

44,548,431 PEOPLE IN 2012
45,340,799 PEOPLE IN 2013

ECONOMY 2014

GRDP: 1,386 TRILLION IDR
138 BILLION US\$
(US/IDR)=10.000 in 2014
GRDP/ CAPITA: **30** MILLION IDR
3,000 us\$
INFLATION RATE: **7.6** %
GROWTH RATE: **10** %

WEST JAVA POPULATION AND ITS PROJECTION



Most of the population are concentrated in The Three Metropolitans

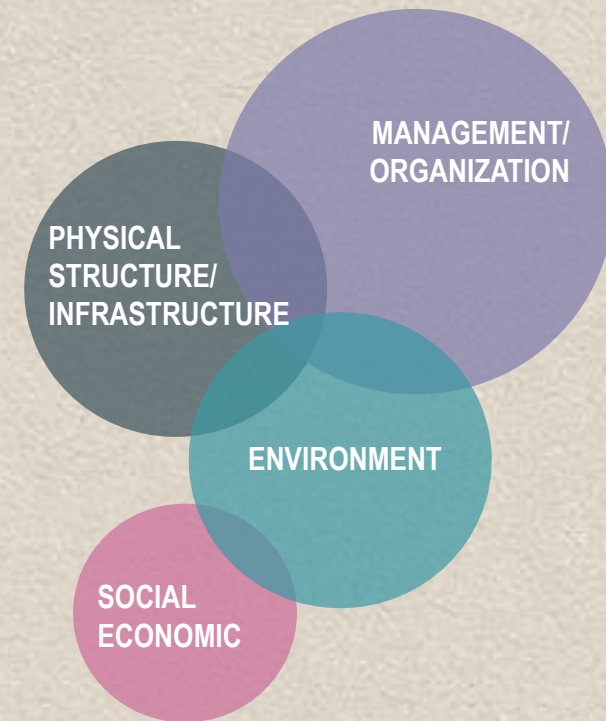
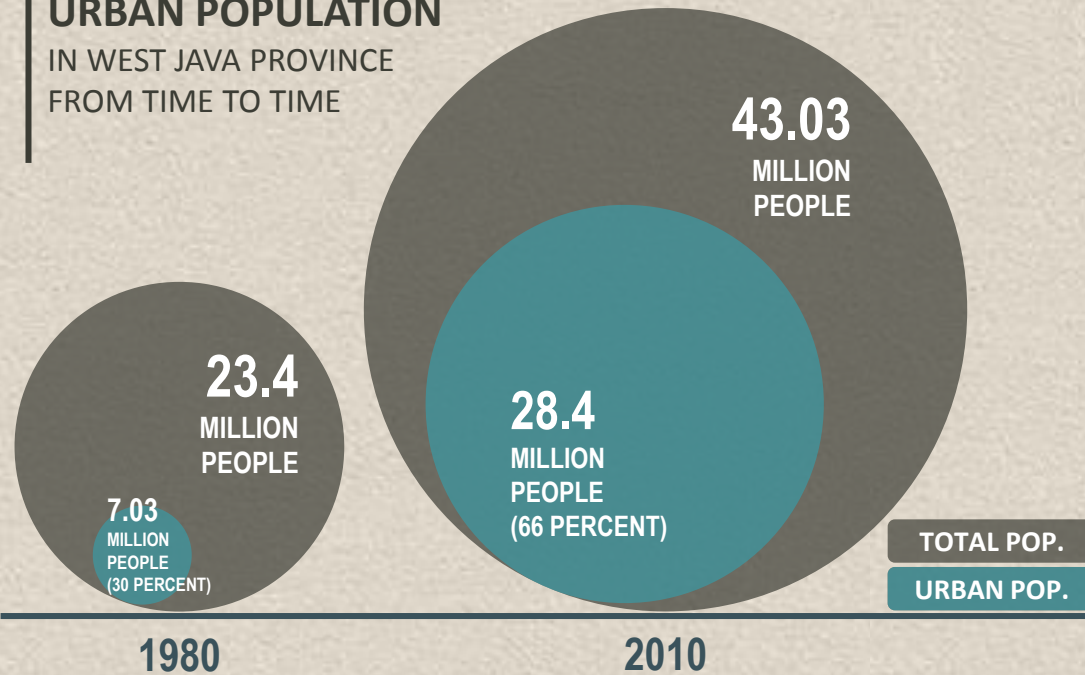
INTRODUCTION

METROPOLITAN DEVELOPMENT

INCREASING CONCERN TOWARDS THE DEVELOPMENT OF METROPOLITAN AREAS IN WEST JAVA PROVINCE

URBAN POPULATION

IN WEST JAVA PROVINCE
FROM TIME TO TIME



SOME OPPORTUNITIES

OF METROPOLITAN DEVELOPMENT

ECONOMY

PROSPERITY

MODERNITY

SUSTAINABILITY

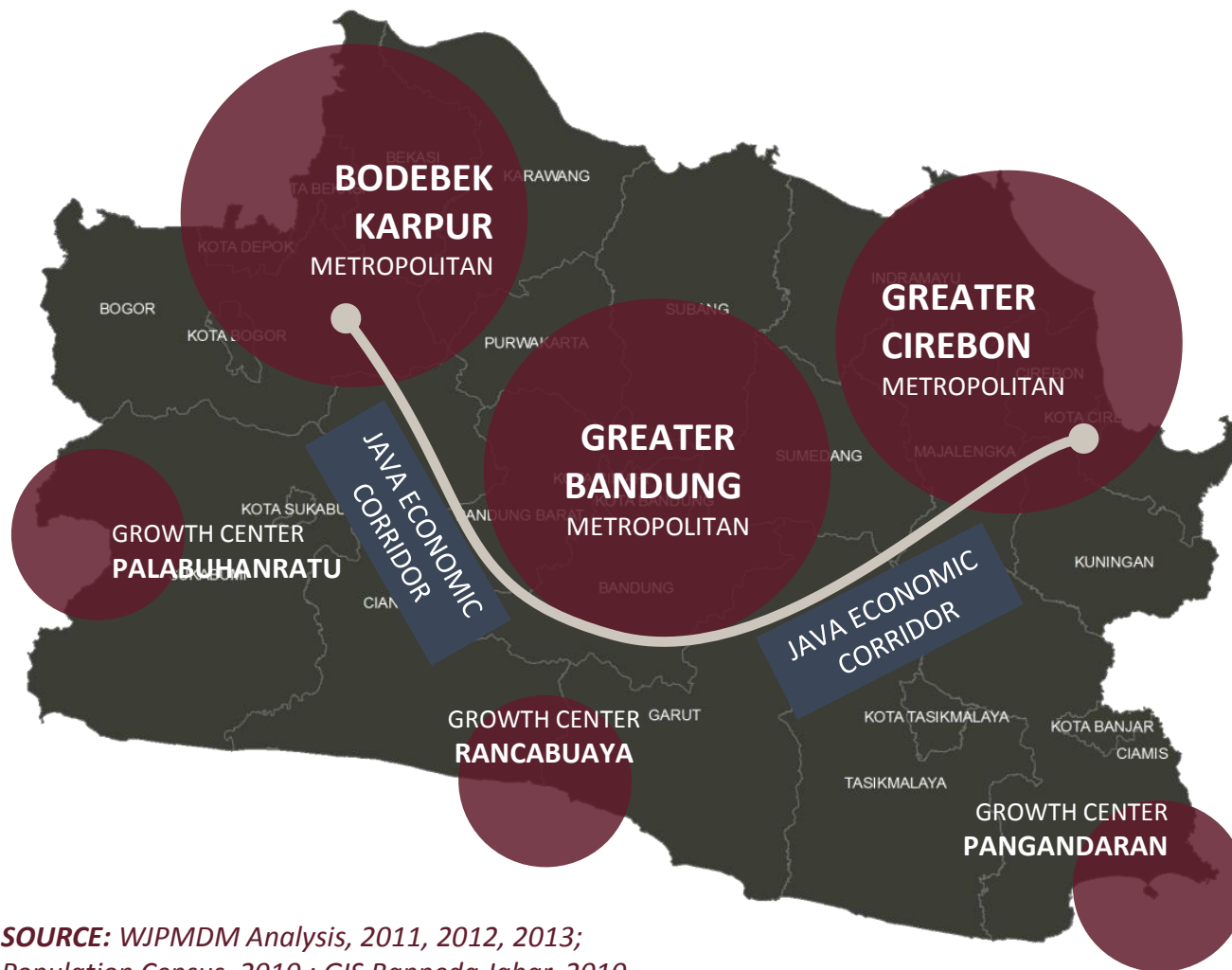
SOME CHALLENGES

TO BE CONSIDERED

INTRODUCTION

METROPOLITANS AND GROWTH CENTERS

IN WEST JAVA PROVINCE



BODEBEK KARPUR

KOTA BOGOR | KAB. BOGOR |
KOTA DEPOK | KOTA BEKASI |
KAB. BEKASI |
KAB. KARAWANG |
KAB. PURWAKARTA |

GREATER BANDUNG

KOTA BANDUNG |
KOTA CIMAHI |
KAB. BANDUNG |
KAB. BANDUNG BARAT |
KAB. SUMEDANG |

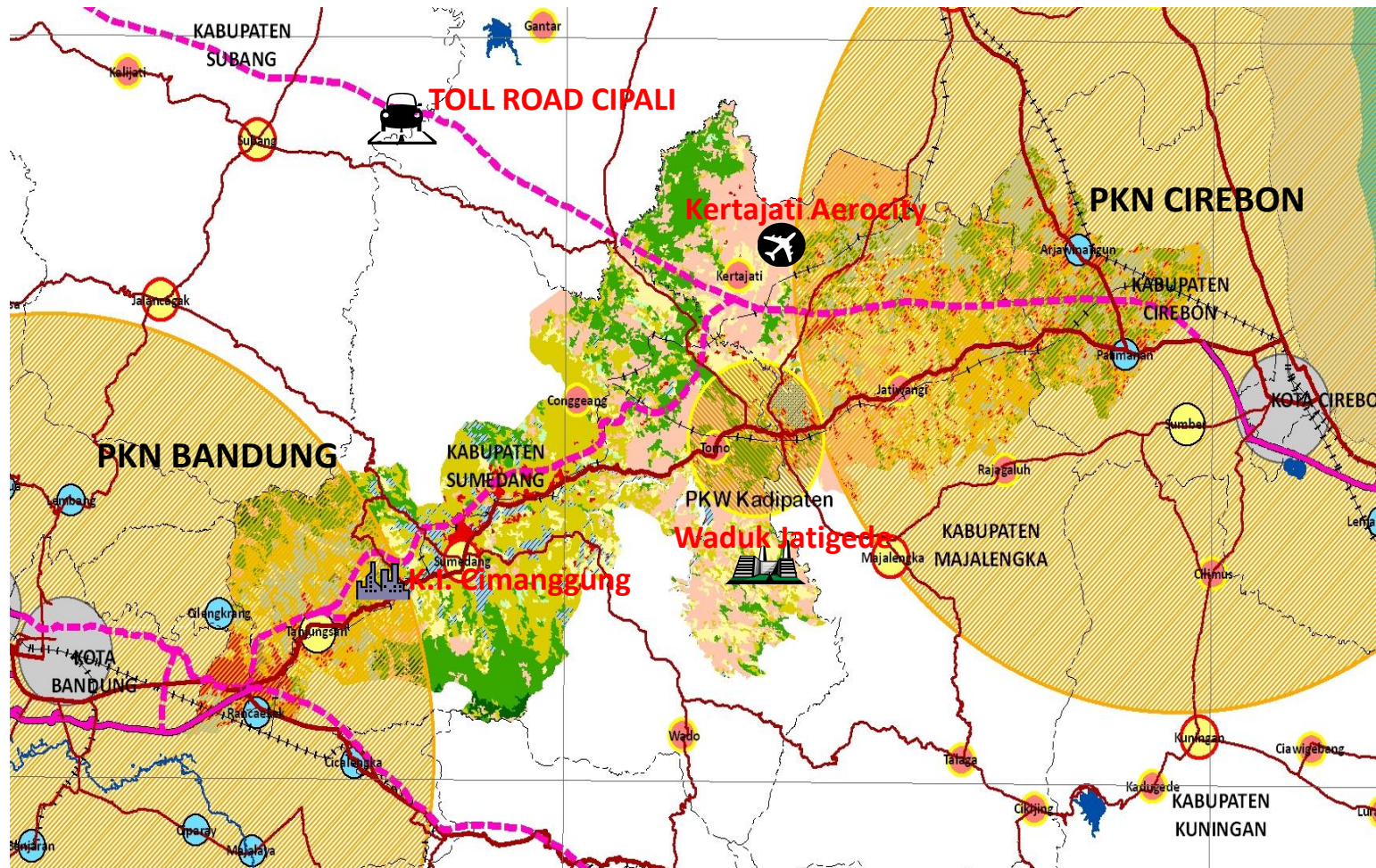
GREATER CIREBON

KOTA CIREBON |
KAB. CIREBON |
KAB. KUNINGAN |
KAB. MAJALENGKA |
KAB. INDRAMAYU |

*SOURCE: WJPMDDM Analysis, 2011, 2012, 2013;
Population Census, 2010 ; GIS Bappeda Jabar, 2010*

INTRODUCTION

KERTAJATI AIRPORT AS A PART OF AERIAL SILK ROAD CONNECTING ASIA-AFRICA WJIA KERTAJATI CONNECTING THE METROPOLITANS (BANDUNG – CIREBON – JAKARTA Corridor)



Source: BAPPEDA PROVINSI JAWA BARAT

“Kebijakan dan Prioritas Pembangunan Infrastruktur Strategis di Jawa Barat “INTRODUCTION

CONCEPT OF METROPOLITAN AND GROWTH CENTER DEVELOPMENT IN WEST JAVA PROVINCE

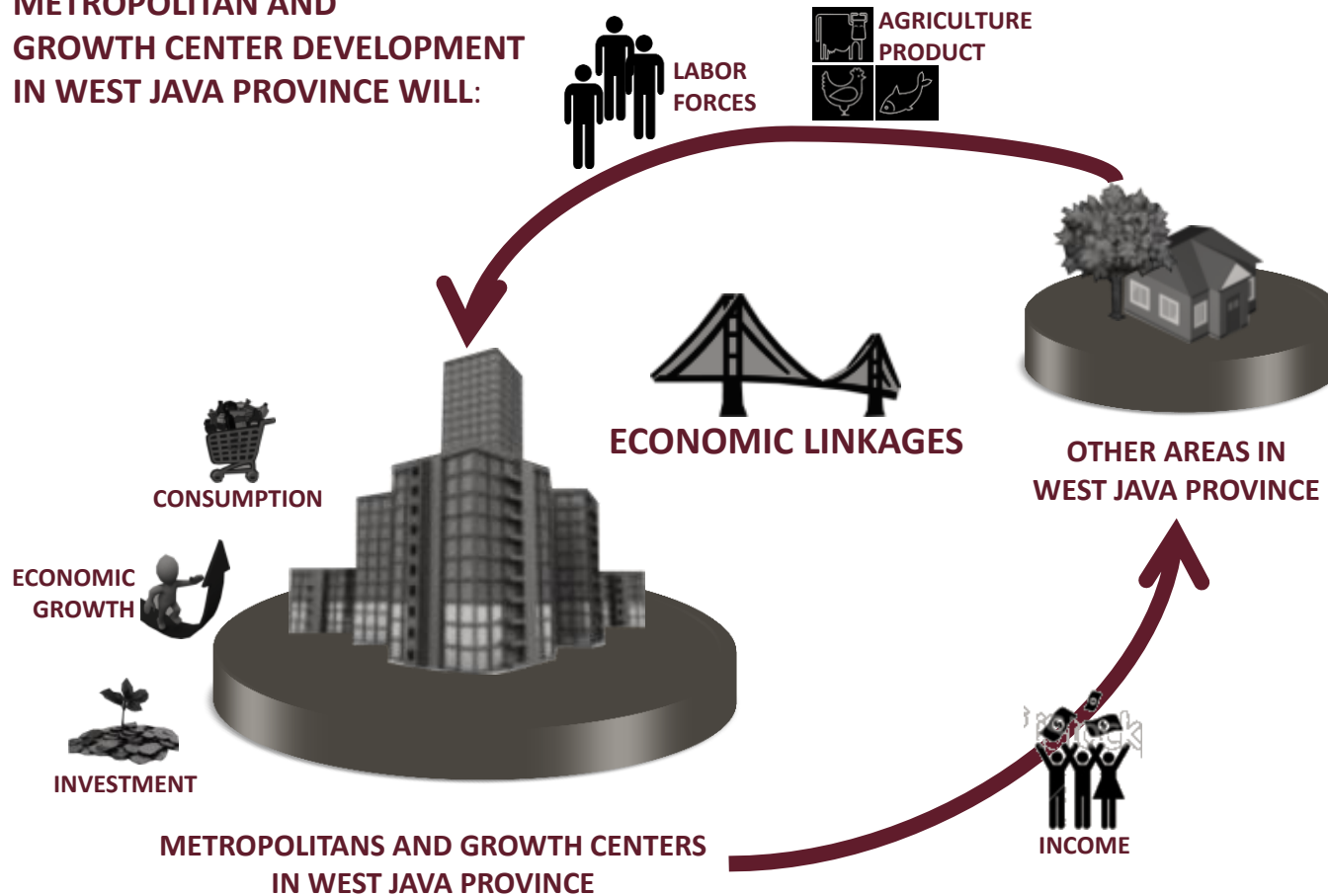
“BRINGING THE
ECONOMY, PROSPERITY, MODERNITY,
AND **SUSTAINABILITY**
FOR ALL WEST JAVA PEOPLE”



CONCEPT

BRINGING WEST JAVA ECONOMY

METROPOLITAN AND GROWTH CENTER DEVELOPMENT IN WEST JAVA PROVINCE WILL:



CREATE MORE JOB OPPORTUNITIES

RAISE INCOME AND INCREASE CONSUMPTION

BOOST REGIONAL ECONOMY

EXPAND THE COMMODITY MARKET

INCREASE PRIVATE INVESTMENT AND GOVERNMENT SPENDING

CREATE ECONOMIC EFFICIENCY

PROMOTE EXPORTS

CONCEPT

BRINGING WEST JAVA PROSPERITY



ACCESS TO
KNOWLEDGE

+



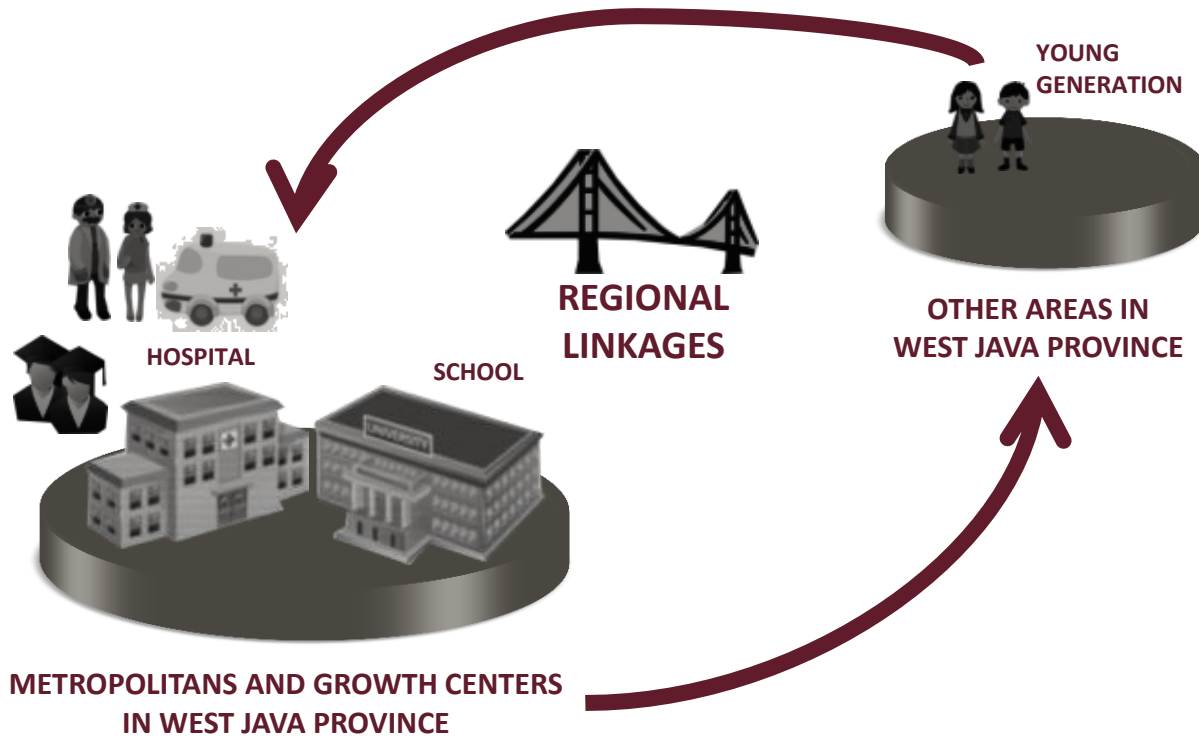
A LONG AND
HEALTHY LIFE

+



A DECENT
STANDARD OF LIVING

=



IMPROVE ACCESS
TO EDUCATION

IMPROVE THE QUALITY
OF EDUCATION SERVICES

IMPROVE ACCESS
TO HEALTHCARE SERVICES

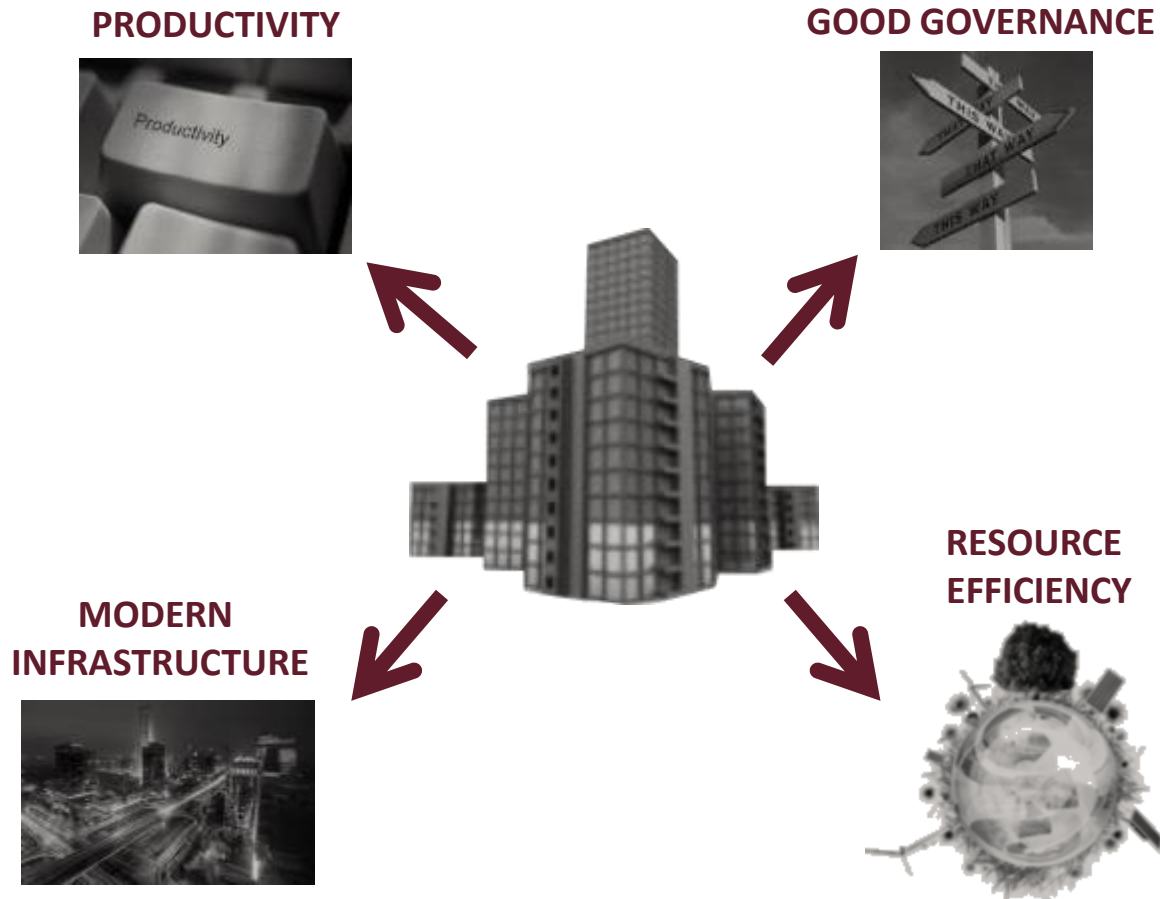
IMPROVE THE QUALITY
OF HEALTHCARE SERVICES

BOOST THE INDIVIDUAL
PURCHASING POWER

CREATE A BETTER
QUALITY OF LIFE

CONCEPT

BRINGING WEST JAVA MODERNITY



BRING SOCIAL CHANGE

IMPROVE SOCIAL
PRODUCTIVITY

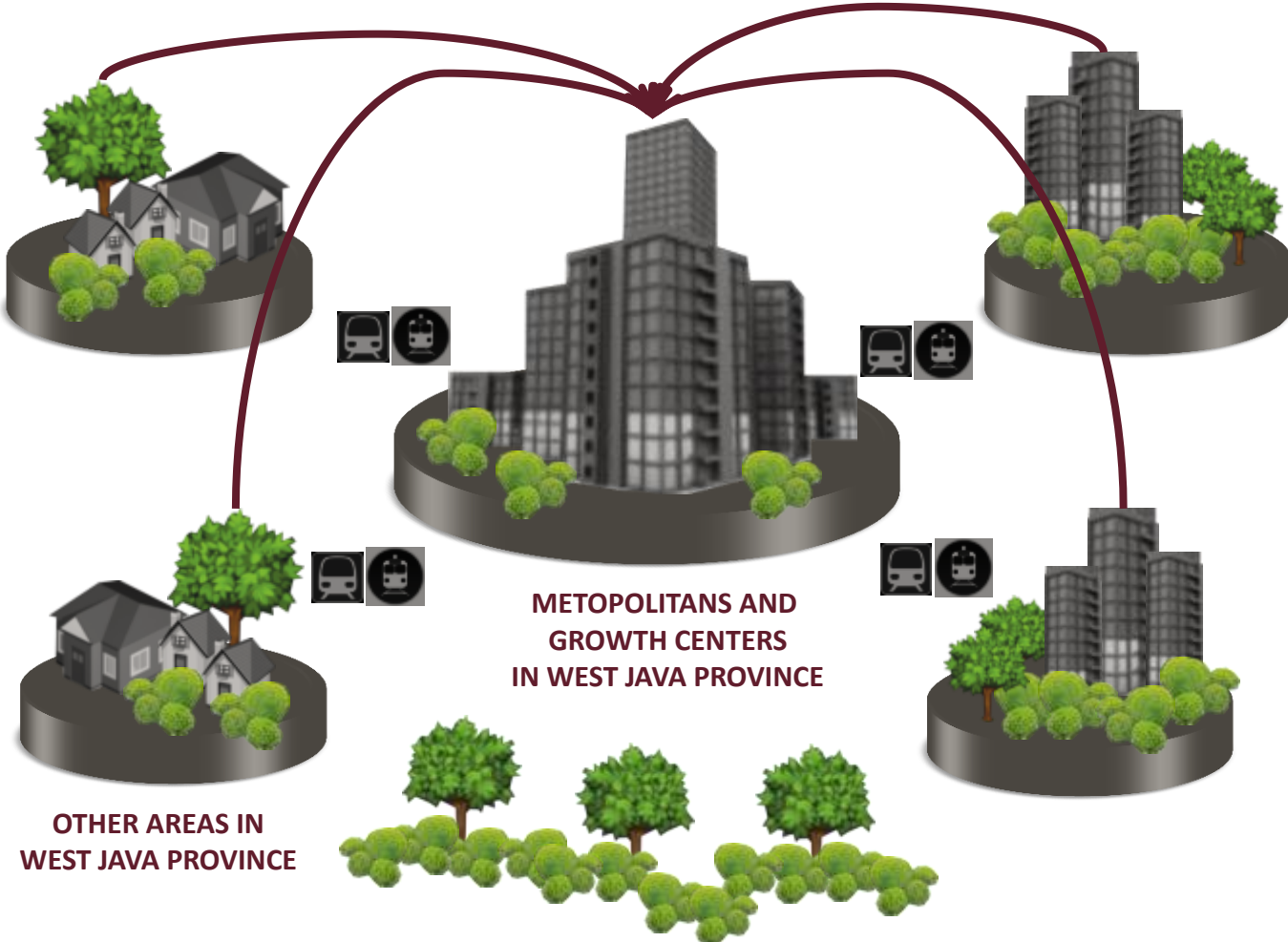
IMPROVE THE QUALITY OF
GOOD GOVERNANCE
PRACTICED

INCREASE EFFICIENCY IN
RESOURCE UTILIZATION

PROMOTE MODERNIZATION
IN INFRASTRUCTURE
DEVELOPMENT

CONCEPT

BRINGING WEST JAVA SUSTAINABILITY



**BRING MORE
CONSERVATION AREAs IN
WEST JAVA PROVINCE**

**PROMOTE THE DEVELOPMENT
OF SUSTAINABLE
INFRASTRUCTURE**

**IMPROVE FINANCIAL
FEASIBILITY OF VARIOUS
SUSTAINABLE GOODS AND
SERVICES PROVISION**

**CREATE A SUSTAINABLE
FISCAL CONDITION**

CONCEPT

THREE METROPOLITANS

IN WEST JAVA PROVINCE

IN ORDER TO BRING THE ECONOMY, PROSPERITY, MODERNITY AND SUSTAINABILITY FOR ALL PEOPLE IN WEST JAVA, THREE METROPOLITANS WILL BE DEVELOPED AS:

BODEBEK KARPUR



AUTONOMOUS METROPOLITAN

BASED ON
MANUFACTURING, INDUSTRY, TRADE,
SERVICE, AND FINANCIAL SECTOR

KEYWORD:

1ST TIER METROPOLITAN | CENTRAL
BUSINESS DISTRICT | SERVICE, FINANCE AND
ADMINISTRATION CENTER

GREATER BANDUNG



MODERN METROPOLITAN

BASED ON
URBAN TOURISM, CREATIVE
INDUSTRY, ARTS, SCIENCE &
TECHNOLOGY

KEYWORD:

24 METROPOLITAN – SCALE ACTIVITIES |
MULTIFUNCTION OPEN PUBLIC SPACE @5
HA | INTEGRATED SOCIAL AND PUBLIC
FACILITIES IN VERTICAL HOUSING

GREATER CIREBON



CULTURAL AND HISTORICAL METROPOLITAN

BASED ON
TOURISM, CRAFTS, AND
INDUSTRIES

KEYWORD:

ART & CULTURE CENTER DEV'T |
PRESERVATION OF ART & HISTORICAL SITES |
EAST GATEWAY FOR WEST JAVA

LINKAGES BETWEEN THE THREE METROPOLITANS AND OTHER AREAS IN WEST JAVA WILL BE DEVELOPED

CONCEPT

THREE GROWTH CENTERS

IN WEST JAVA PROVINCE

THREE GROWTH CENTERS WILL BE DEVELOPED TO
CREATE REGIONAL DEVELOPMENT BALANCE IN THE SOUTHERN PART OF WEST JAVA

EACH GROWTH CENTER WILL BE DEVELOPED ACCORDING TO THEIR RESPECTIVE
ABSOLUTE, COMPARATIVE, AND COMPETITIVE ADVANTAGES

PANGANDARAN



GROWTH CENTER
BASED ON
TOURISM

PALABUHANRATU



GROWTH CENTER
BASED ON
TOURISM AND FISHERY

RANCABUAYA



GROWTH CENTER
BASED ON
TOURISM

LINKAGES BETWEEN THE THREE GROWTH CENTERS AND OTHER AREAS IN WEST JAVA WILL BE DEVELOPED

CONCEPT

METROPOLITAN DEVELOPMENT

METROPOLITAN DELINEATION

2010 | 2015 | 2020 | 2025



BODEBEK KARPUR

6 DISTRICTS IN KOTA BOGOR | 17 DISTRICTS IN KAB. BOGOR |
11 DISTRICTS IN KOTA DEPOK | 12 DISTRICTS IN KOTA BEKASI |
19 DISTRICTS IN KAB. BEKASI | 11 DISTRICTS IN KAB. KARAWANG |
6 DISTRICTS IN KAB. PURWAKARTA |
(TOTAL: 82 DISTRICTS)

11.6 MILLION PEOPLE IN 2010
(300,845 HA)

GREATER BANDUNG

30 DISTRICTS IN KOTA BANDUNG |
3 DISTRICTS IN KOTA CIMAHI |
6 DISTRICTS IN KAB. BANDUNG BARAT |
16 DISTRICTS IN KAB. BANDUNG |
1 DISTRICT IN KAB. SUMEDANG |
(TOTAL: 56 DISTRICTS)

5.8 MILLION PEOPLE IN 2010
(106,015 HA)

GREATER CIREBON

5 DISTRICTS IN KOTA CIREBON |
23 DISTRICTS IN KAB. CIREBON |
1 DISTRICT IN KAB. KUNINGAN |
(TOTAL: 29 DISTRICTS)

1.58 MILLION PEOPLE IN 2010
(57,369 HA)

SOURCE: WJPMDM Analysis, 2011, 2012, 2013 | Population Census, 2010 | GIS Bappeda Jabar, 2010

CONCEPT

METROPOLITAN DEVELOPMENT

METROPOLITAN DELINEATION

2010 | 2015 | 2020 | 2025



BODEBEK KARPUR

6 DISTRICTS IN KOTA BOGOR | 17 DISTRICTS IN KAB. BOGOR |
11 DISTRICTS IN KOTA DEPOK | 12 DISTRICTS IN KOTA BEKASI |
19 DISTRICTS IN KAB. BEKASI | 11 DISTRICTS IN KAB. KARAWANG |
7 DISTRICTS IN KAB. PURWAKARTA |
(TOTAL: 83 DISTRICTS)

14.3 MILLION PEOPLE IN 2015
(310,753 HA)

GREATER BANDUNG

30 DISTRICTS IN KOTA BANDUNG |
3 DISTRICTS IN KOTA CIMAHI |
8 DISTRICTS IN KAB. BANDUNG BARAT |
18 DISTRICTS IN KAB. BANDUNG |
2 DISTRICT IN KAB. SUMEDANG |
(TOTAL: 61 DISTRICTS)

9.9 MILLION PEOPLE IN 2015
(134,042 HA)

GREATER CIREBON

5 DISTRICTS IN KOTA CIREBON |
24 DISTRICTS IN KAB. CIREBON |
1 DISTRICT IN KAB. KUNINGAN |
(TOTAL: 30 DISTRICTS)

2.4 MILLION PEOPLE IN 2015
(60,425 HA)

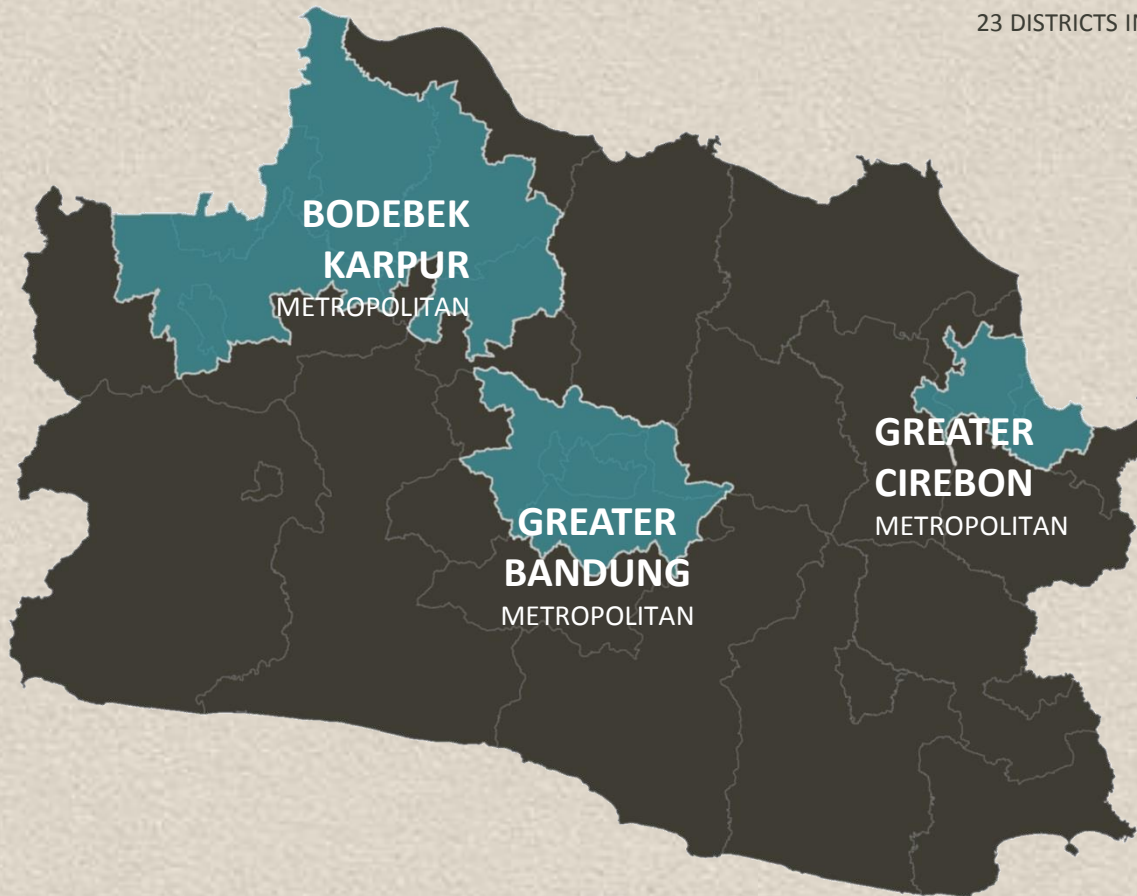
SOURCE: WJPMDM Analysis, 2011, 2012, 2013 | Population Census, 2010 | GIS Bappeda Jabar, 2010

CONCEPT

METROPOLITAN DEVELOPMENT

METROPOLITAN DELINEATION

2010 | 2015 | **2020** | 2025



BODEBEK KARPUR

6 DISTRICTS IN KOTA BOGOR | 21 DISTRICTS IN KAB. BOGOR |
11 DISTRICTS IN KOTA DEPOK | 12 DISTRICTS IN KOTA BEKASI |
23 DISTRICTS IN KAB. BEKASI | 19 DISTRICTS IN KAB. KARAWANG |
11 DISTRICTS IN KAB. PURWAKARTA |
(TOTAL: 103 DISTRICTS)

18.36 MILLION PEOPLE IN 2020
(450,924HA)

GREATER BANDUNG

30 DISTRICTS IN KOTA BANDUNG |
3 DISTRICTS IN KOTA CIMAHI |
9 DISTRICTS IN KAB. BANDUNG BARAT |
22 DISTRICTS IN KAB. BANDUNG |
4 DISTRICT IN KAB. SUMEDANG |
(TOTAL: 68 DISTRICTS)

11.4 MILLION PEOPLE IN 2020
(168,629 HA)

GREATER CIREBON

5 DISTRICTS IN KOTA CIREBON |
26 DISTRICTS IN KAB. CIREBON |
1 DISTRICT IN KAB. KUNINGAN |
2 DISTRICTS IN KAB. MAJALENGKA |
(TOTAL: 34 DISTRICTS)

3.9 MILLION PEOPLE IN 2020
(71,775 HA)

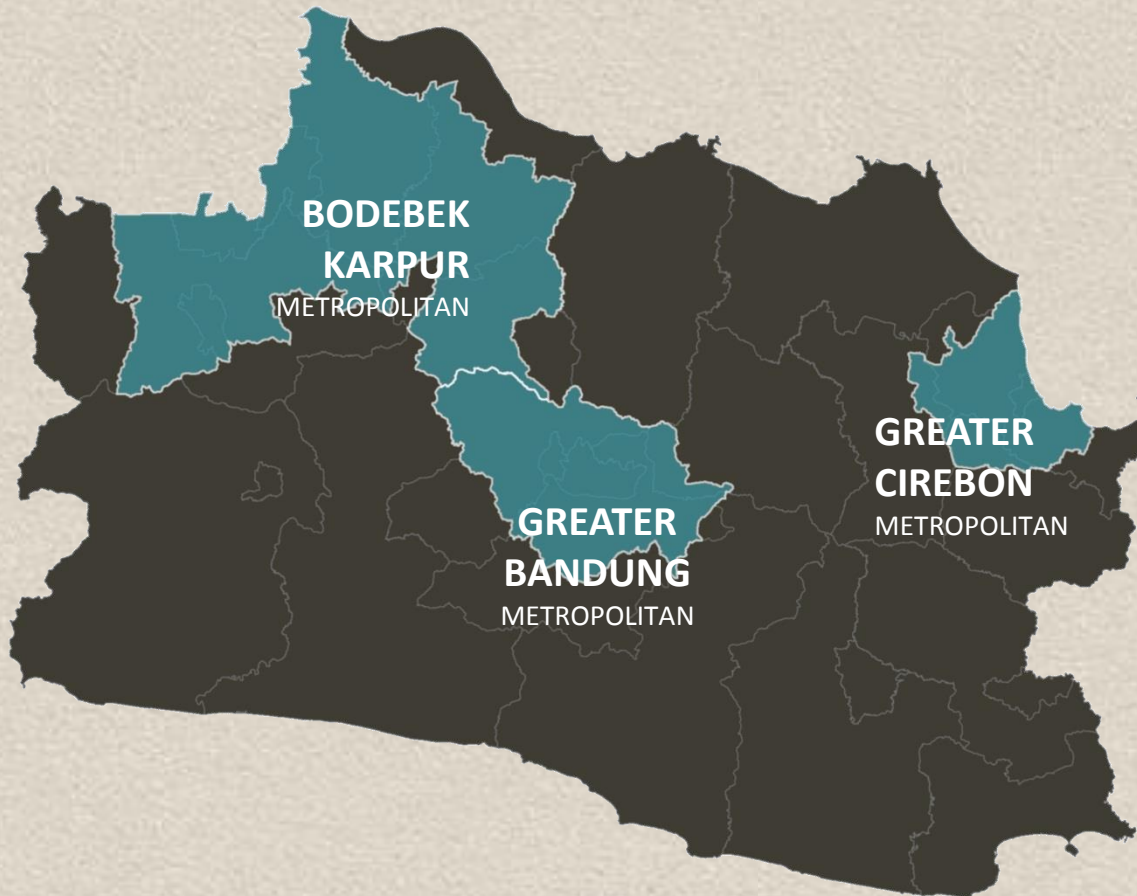
SOURCE: WJPMDDM Analysis, 2011, 2012, 2013 | Population Census, 2010 | GIS Bappeda Jabar, 2010

CONCEPT

METROPOLITAN DEVELOPMENT

METROPOLITAN DELINEATION

2010 | 2015 | 2020 | **2025**



BODEBEK KARPUR

6 DISTRICTS IN KOTA BOGOR | 25 DISTRICTS IN KAB. BOGOR |
11 DISTRICTS IN KOTA DEPOK | 12 DISTRICTS IN KOTA BEKASI |
23 DISTRICTS IN KAB. BEKASI | 20 DISTRICTS IN KAB KARAWANG |
14 DISTRICTS IN KAB. PURWAKARTA |
(TOTAL: 111 DISTRICTS)

23.16 MILLION PEOPLE IN 2025
(503,634 HA)

GREATER BANDUNG

30 DISTRICTS IN KOTA BANDUNG |
3 DISTRICTS IN KOTA CIMAHI |
11 DISTRICTS IN KAB. BANDUNG BARAT |
23 DISTRICTS IN KAB. BANDUNG |
4 DISTRICT IN KAB. SUMEDANG |
(TOTAL: 71 DISTRICTS)

12.8 MILLION PEOPLE IN 2025
(196,821 HA)

GREATER CIREBON

5 DISTRICTS IN KOTA CIREBON |
28 DISTRICTS IN KAB. CIREBON |
5 DISTRICT IN KAB. KUNINGAN |
3 DISTRICTS IN KAB. MAJALENGKA |
KAB. INDRAMAYU |
(TOTAL: 41 DISTRICTS)

6.58 MILLION PEOPLE IN 2025
(98,722 HA)

SOURCE: WJPMDDM Analysis, 2011, 2012, 2013 | Population Census, 2010 | GIS Bappeda Jabar, 2010

CONCEPT

WHAT IS EXPECTED ROLE OF METROPOLIS KERTAJATI FOR WEST JAVA REGIONAL DEVELOPMENT?

ISSUES AND PROBLEMS

TO PLAY CONNECTING REGIONAL LINKAGES TO SPEED UP THE REGIONAL DEVELOPMENT GOALS

By helping to utilize the region advantages and to respond issues and problems of metropolitans in the region.

EXPECTED ROLE

- Traffic congestions (especially during peak hour, weekend, and holiday season)
- Lack of metropolitan-scale integrated transportation system
- Inadequate of public transport
- Unemployment
- Insufficient of urban facilities and services (regional solid waste facility, clean water network system, clean water installation, waste water network system, sewerage system)
- Lack of green open areas
- Slum and squatter areas
- Environmental degradation
- Excessive flood area
- Air, water, and noise pollution
- The increasing development of housing and commercial facilities
- Preservation of environmentally sensitive areas

WHAT IS EXPECTED IMPACT OF AETROPOLIS KERTAJATI FOR WEST JAVA REGIONAL DEVELOPMENT?

BOOST UP THE REGIONAL ECONOMY

CREATE MORE
INTERNATIONAL JOB
OPPORTUNITIES

RAISE BUSINESS INCOME AND
INCREASE CONSUMPTION

BOOST REGIONAL
ECONOMY

EXPAND THE
COMMODITY MARKET

INCREASE FOREIGN
INVESTMENT

CREATE GLOBAL ECONOMIC
ENVIRONMENT

PROMOTE EXPORTS

INCREASE PROSPERITY OF THE PEOPLE

IMPROVE ACCESS
TO INTERNATIONAL
EDUCATION

IMPROVE THE QUALITY
OF EDUCATION

IMPROVE ACCESS
TO INTERNATIONAL
HEALTHCARE SERVICES

IMPROVE THE QUALITY
OF PUBLIC HEALTH

BOOST THE INDIVIDUAL
PURCHASING POWER

CREATE A BETTER
QUALITY OF LIFE

EXPECTED IMPACT

WHAT IS EXPECTED IMPACT OF AETROPOLIS KERTAJATI FOR WEST JAVA REGIONAL DEVELOPMENT?

SPEED UP MODERNIZATION PROCESS

BRING SMOOTH SOCIAL CHANGE

IMPROVE SOCIAL PRODUCTIVITY

IMPROVE THE QUALITY OF GOOD GOVERNANCE PRACTICED

INCREASE EFFICIENCY IN RESOURCE UTILIZATION

PROMOTE MODERNIZATION IN INFRASTRUCTURE DEVELOPMENT

CREATE SUSTAINABLE DEVELOPMENT

CREATE MORE CONSERVATION AREAS IN WEST JAVA PROVINCE

PROMOTE THE DEVELOPMENT OF SUSTAINABLE INFRASTRUCTURE

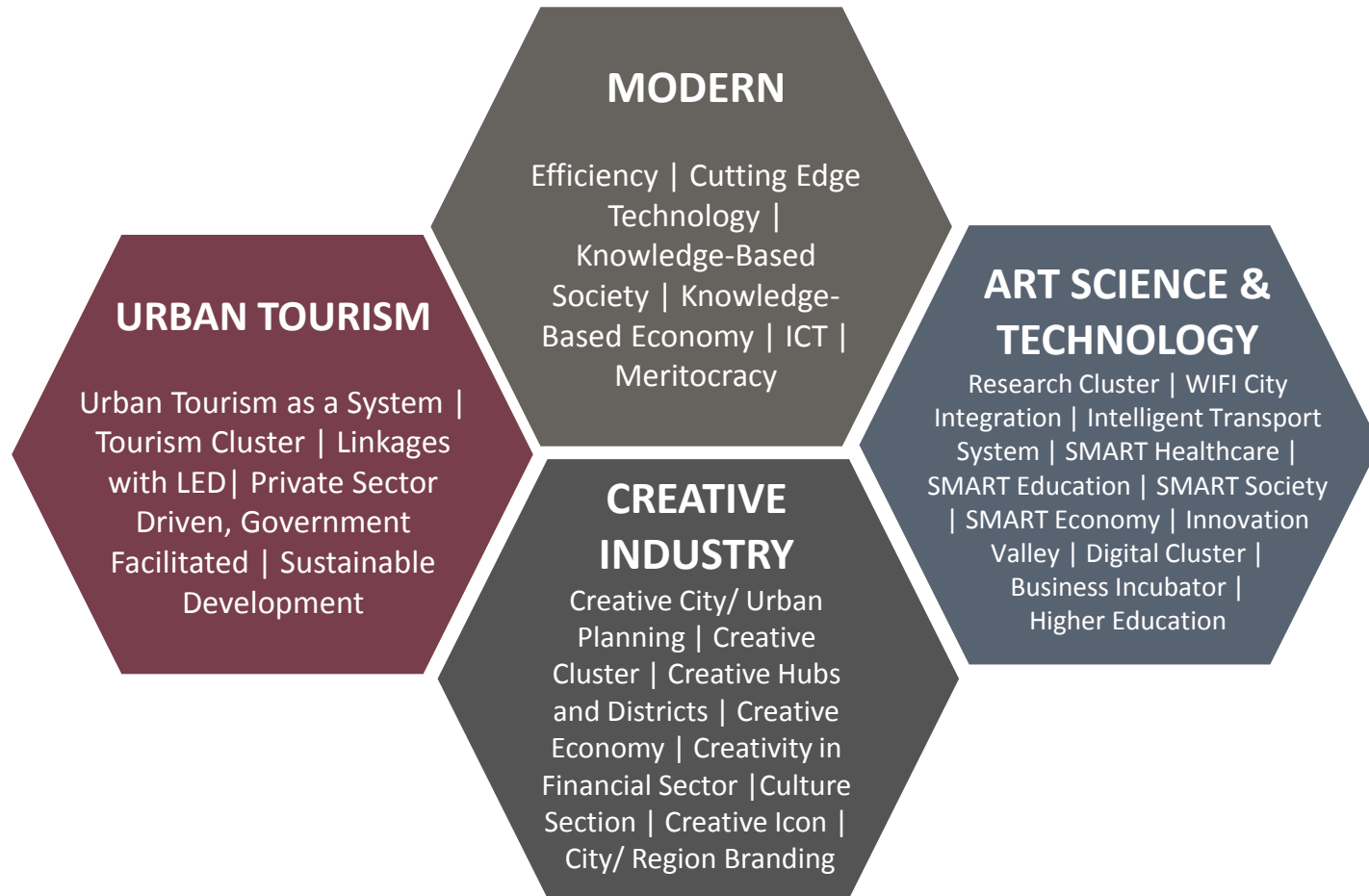
IMPROVE FINANCIAL FEASIBILITY OF VARIOUS PUBLICLY PROVIDED GOOD AND SERVICE PROVISION

CREATE SUSTAINABLE LOCAL FISCAL CONDITION

EXPECTED IMPACT

AN ILLUSTRATION OF THE DEVELOPMENT CONCEPT

“GREATER BANDUNG AS A MODERN METROPOLITAN BASED ON URBAN TOURISM, CREATIVE INDUSTRY, ARTS SCIENCE AND TECHNOLOGY”



GREATER BANDUNG METROPOLITAN

MODERN CHARACTERISTIC:

EFFICIENCY – CUTTING EDGE TECHNOLOGY – KNOWLEDGE BASED SOCIETY – KNOWLEDGE BASED ECONOMY – NETWORK SOCIETY – ICT - MERITOCRACY

LARGE SCALE VERTICAL HOUSING CLUSTER

Each cluster consists of a minimum ten 10-story building

INTEGRATED SOCIAL AND PUBLIC FACILITIES

In the first three levels of each vertical housing building

INTEGRATED & SUSTAINABLE TRANSPORTATION SYSTEM

Connecting each activity centers (housing, commercial, trade center, education center, government offices, business headquarters, clean industries, etc)

MULTIFUNCTION OPEN PUBLIC SPACE AND PLAZA

@ 5 HA

24 METROPOLITAN-SCALE ACTIVITIES

100 DEVELOPMENT BLOCKS

THOUSAND SMALL PUBLIC CEMETERY DEVELOPMENT

HUSEIN AIRPORT RELOCATION

AN ILLUSTRATION

REGIONAL ADVANTAGES

GREATER BANDUNG METROPOLITAN

BASIN-SHAPED REGION
SURROUNDED BY MOUNTAINS

VARIOUS NATURAL TOURISM
OBJECTS

HISTORICAL HERITAGE, HISTORICAL
BUILDINGS, AND VARIOUS
CULTURAL HERITAGE

**ABSOLUTE
ADVANTAGES**

(CIPULARANG TOLL ROAD,
CISUMDAWU TOLL ROAD,
TRANSPORTATION NODES – HUSEIN
SASTRANEGARA-KERTAJATI
AIRPORTS, RAIL ROADS, BANDUNG
TRAIN STATION – BUS TERMINALS,
HIGH SPEED TRAIN)

MODERN & TRADITIONAL
COMMERCIAL INFRASTRUCTURE

HIGHLY EXPERIENCED LABOR OF
TEXTILE AND FOOD INDUSTRY

**COMPARATIVE
ADVANTAGES**

CREATIVE COMMUNITIES
INNOVATIVE HUMAN RESOURCES
THE EXISTENCE OF WORLD CLASS
UNIVERSITY

RESEARCH AND DEVELOPMENT
FACILITIES

**COMPETITIVE
ADVANTAGES**

AN ILLUSTRATION

DEVELOPMENT CONCEPT

GREATER BANDUNG AS MODERN METROPOLITAN

24 METROPOLITAN SCALE ACTIVITIES

SETTLEMENT	EDUCATION	HEALTHCARE SERVICE	WORSHIP
COMMERCIAL AND RETAIL	HOTEL AND RESTAURANTS	HANG-OUT AND SOCIAL LIFE	CREATIVE INDUSTRY
OFFICE	TOURISM AND RECREATION	ENVIRONMENTAL CONSERVATION	INFORMAL SECTOR
ART AND CULTURE	FESTIVAL	ART, HISTORY AND CULTURE APPRECIATION	ASPIRATION EXPRESSING
LITERACY DEVELOPMENT	SPORT	BUILDING AND HISTORICAL AREA CONSERVATION	COMMUNITY ACTIVITY
PARKING	COGNITIVE DEVELOPMENT FOR CHILDREN	ELDERLY NURSING	NIGHTLIFE ACTIVITY

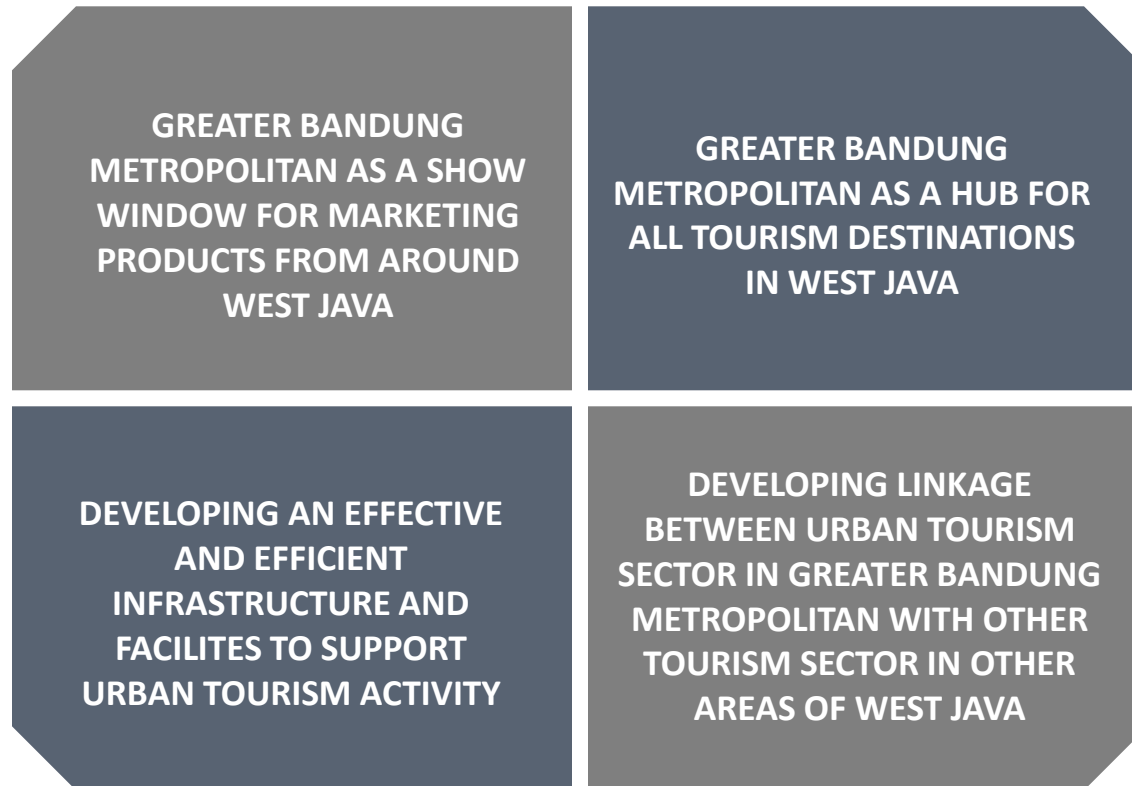
AN ILLUSTRATION

DEVELOPMENT CONCEPT

GREATER BANDUNG BASED ON URBAN TOURISM

URBAN TOURISM CHARACTERISTIC:

URBAN TOURISM AS A SYSTEM – TOURISM CLUSTER – LINKAGES WITH LED – PRIVATE SECTOR DRIVEN – GOVERNMENT FACILITATED – SUSTAINABLE DEVELOPMENT



AN ILLUSTRATION

DEVELOPMENT CONCEPT

GREATER BANDUNG BASED ON CREATIVE INDUSTRY

CREATIVE INDUSTRY CHARACTERISTIC:

CREATIVE CITY/ URBAN PLANNING – CREATIVE CLUSTER – CREATIVE HUBS AND DISTRICTS – INNOVATION CLUSTER – CREATIVE ECONOMY – CREATIVITY IN FINANCIAL SERVICES – CULTURE SECTION – CREATIVE ICON – CITY/ REGION BRANDING

STIMULATING THE
DEVELOPMENT OF CREATIVE
PRODUCTS WITH HIGH
ECONOMIC VALUE

DEVELOPING BUSINESS AND
CREATIVE ECONOMY INCUBATOR
CENTER

DEVELOPING CREATIVE
PRODUCTS MARKET CENTERS

DEVELOPING PUBLIC SPACES
TO SUPPORT THE
DEVELOPMENT AND
ACTIVITY OF CREATIVE
INDUSTRY

DEVELOPING LINKAGE BETWEEN
CREATIVE INDUSTRY CLUSTERS IN
GREATER BANDUNG
METROPOLITAN, WEST JAVA,
INDONESIA, AND
INTERNATIONAL

DEVELOPING ART GALLERY,
CONVENTION CENTER TO
SUPPORT THE ACTIVITY OF
CREATIVE INDUSTRY

AN ILLUSTRATION

DEVELOPMENT CONCEPT

GREATER BANDUNG BASED ON ART SCIENCE AND TECHNOLOGY

ART SCIENCE AND TECHNOLOGY CHARACTERISTIC:

RESEARCH CLUSTER – WIFI CITY INTEGRATION – INTELLIGENT TRANSPORT SYSTEM – SMART HEALTHCARE – SMART EDUCATION – SMART SOCIETY – SMART ECONOMY – INNOVATION VALLEY – HIGHER EDUCATION

DEVELOPING HIGHER
EDUCATION AS AN ART
SCIENCE AND TECHNOLOGY
DEVELOPMENT CENTER

DEVELOPING LINKAGE
BETWEEN INNOVATION
CLUSTERS IN GREATER
BANDUNG METROPOLITAN,
WEST JAVA, INDONESIAN, AND
INTERNATIONAL

DEVELOPING INNOVATION
AND RESEARCH CLUSTER IN
WALINI AND JATINANGOR/
TANJUNGSARI

DEVELOPING VARIOUS URBAN
INFRASTRUCTURE AND
FACILITIES BASED ON ART
SCIENCE AND TECHNOLOGY

AN ILLUSTRATION

DEVELOPMENT CONCEPT

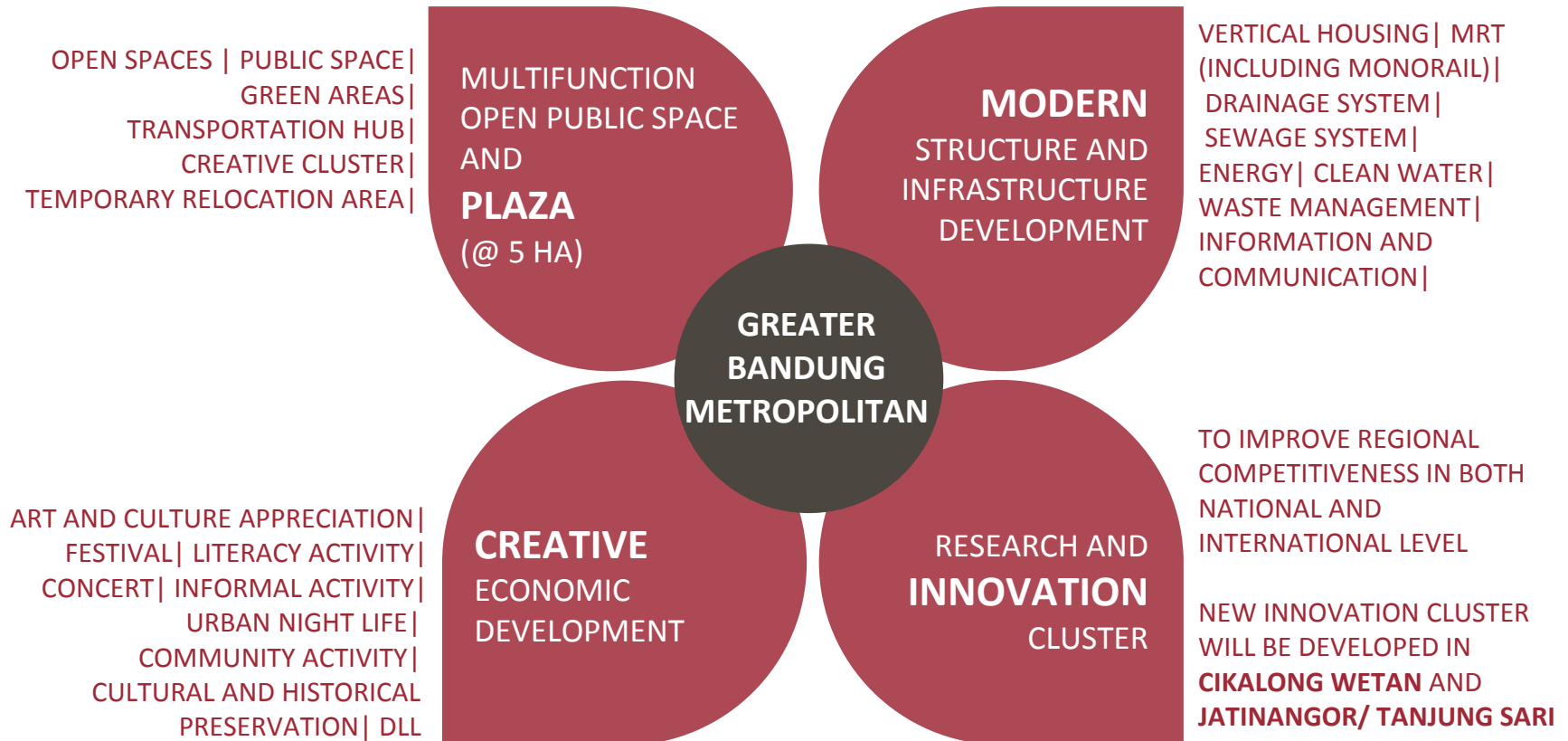
POPULATION SIZE AS MAIN CONSIDERATION



AN ILLUSTRATION

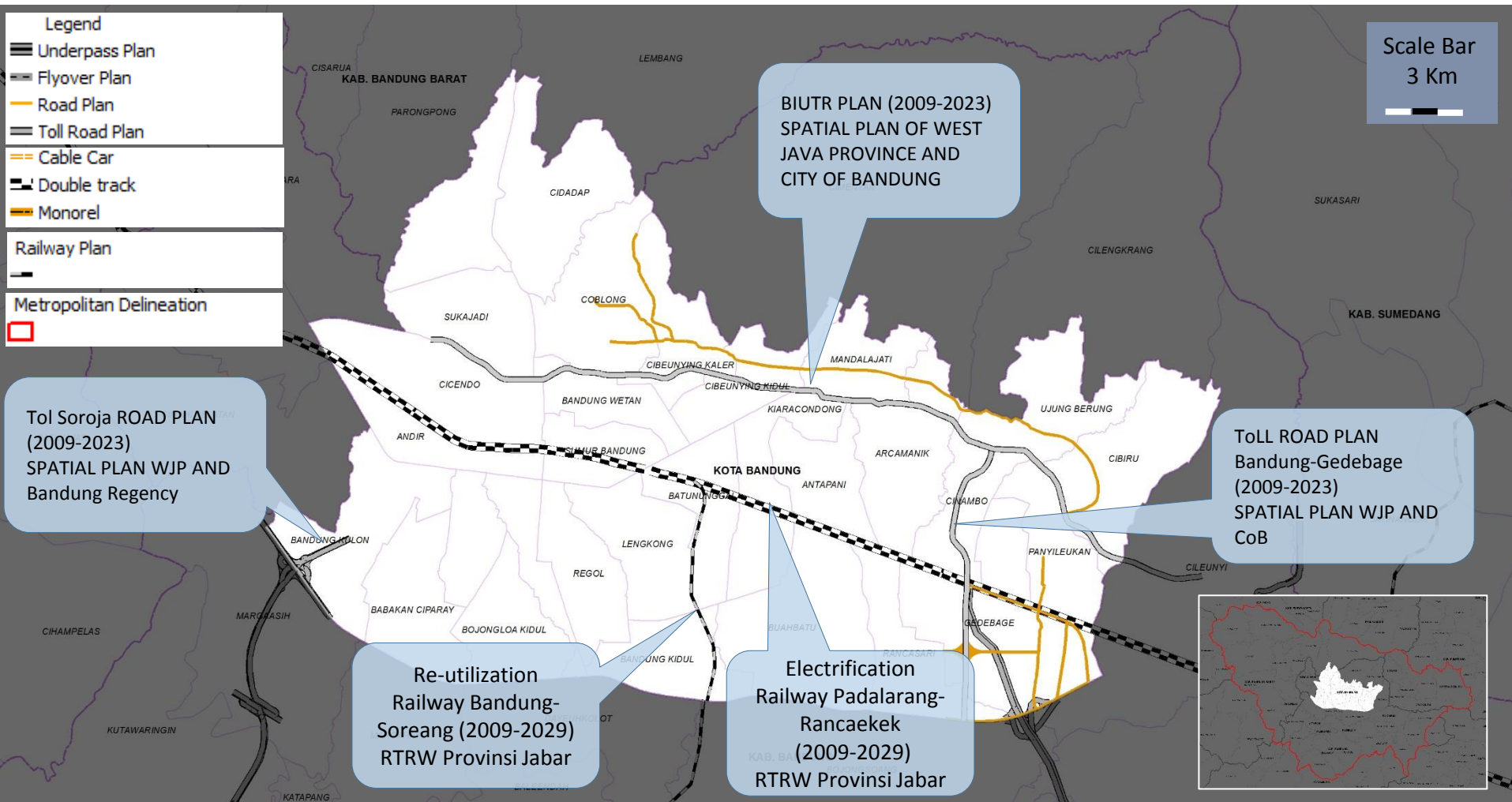
DEVELOPMENT CONCEPT

SOME STRATEGIES



AN ILLUSTRATION

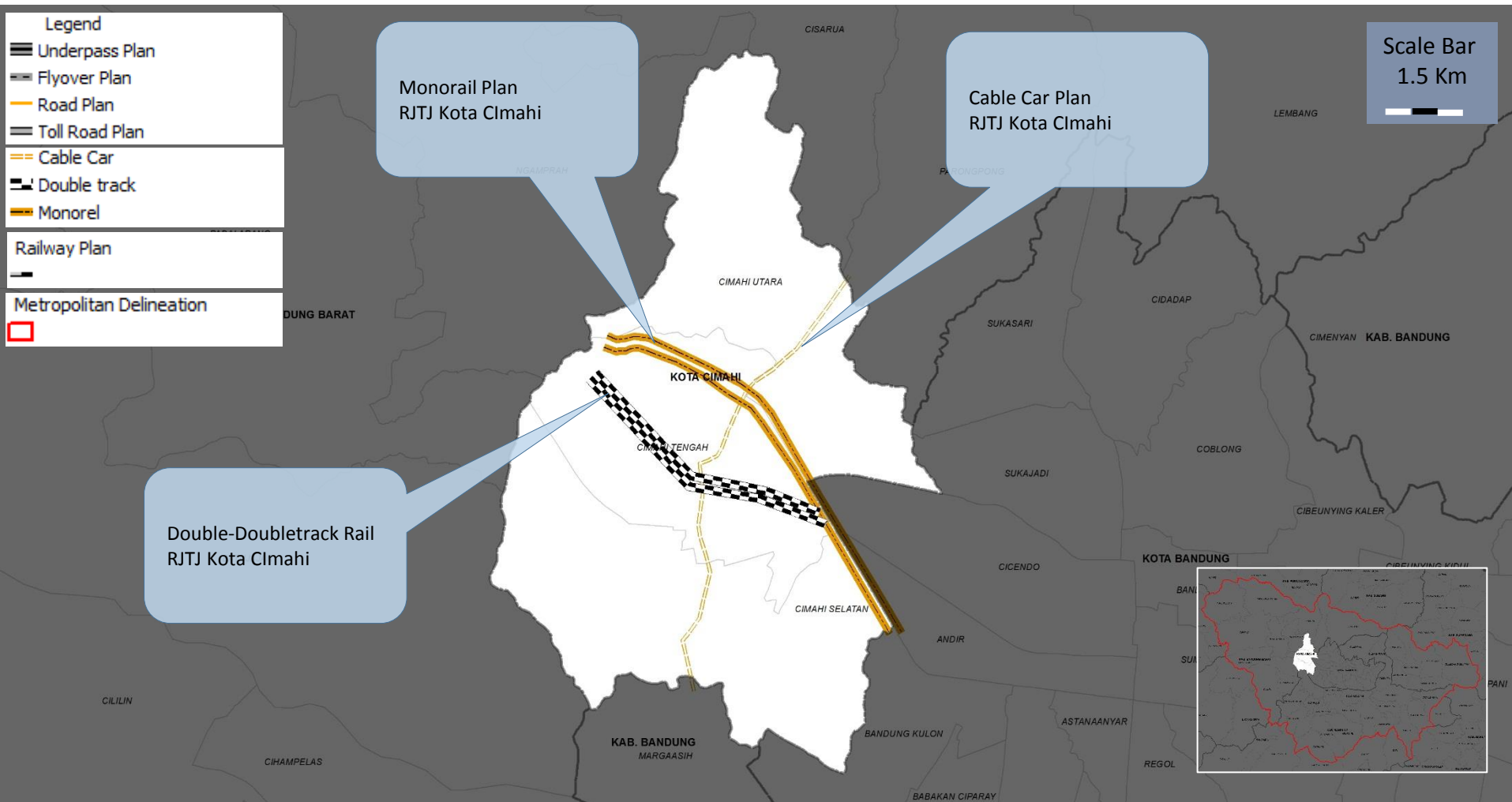
GREATER BANDUNG METROPOLITAN CITY OF BANDUNG



URBAN TRANSPORT DEVELOPMENT PLAN

GREATER BANDUNG METROPOLITAN

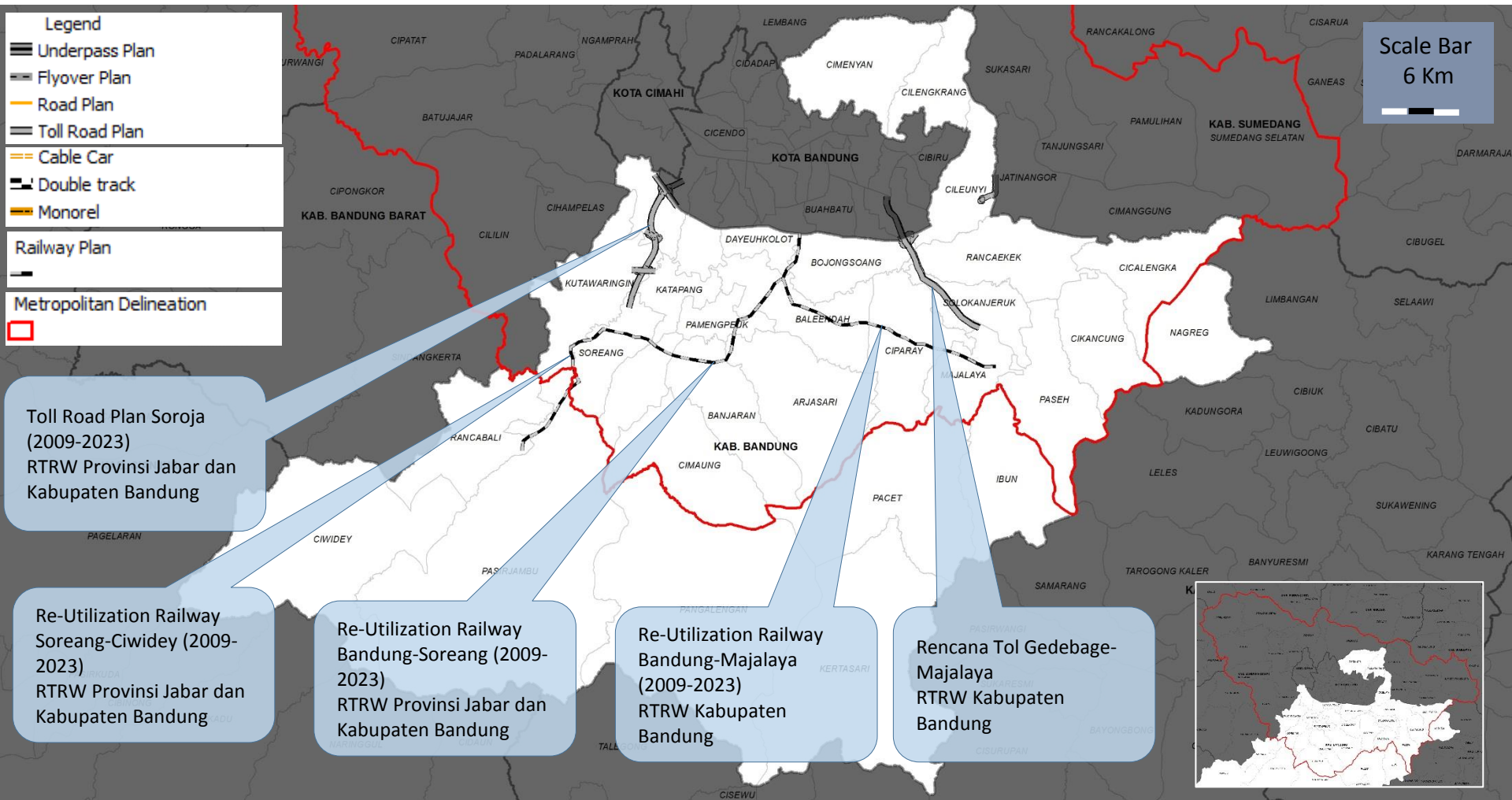
CITY OF CIMAH



URBAN TRANSPORT DEVELOPMENT PLAN

GREATER BANDUNG METROPOLITAN

BANDUNG REGENCY



URBAN TRANSPORT DEVELOPMENT PLAN

GREATER BANDUNG METROPOLITAN

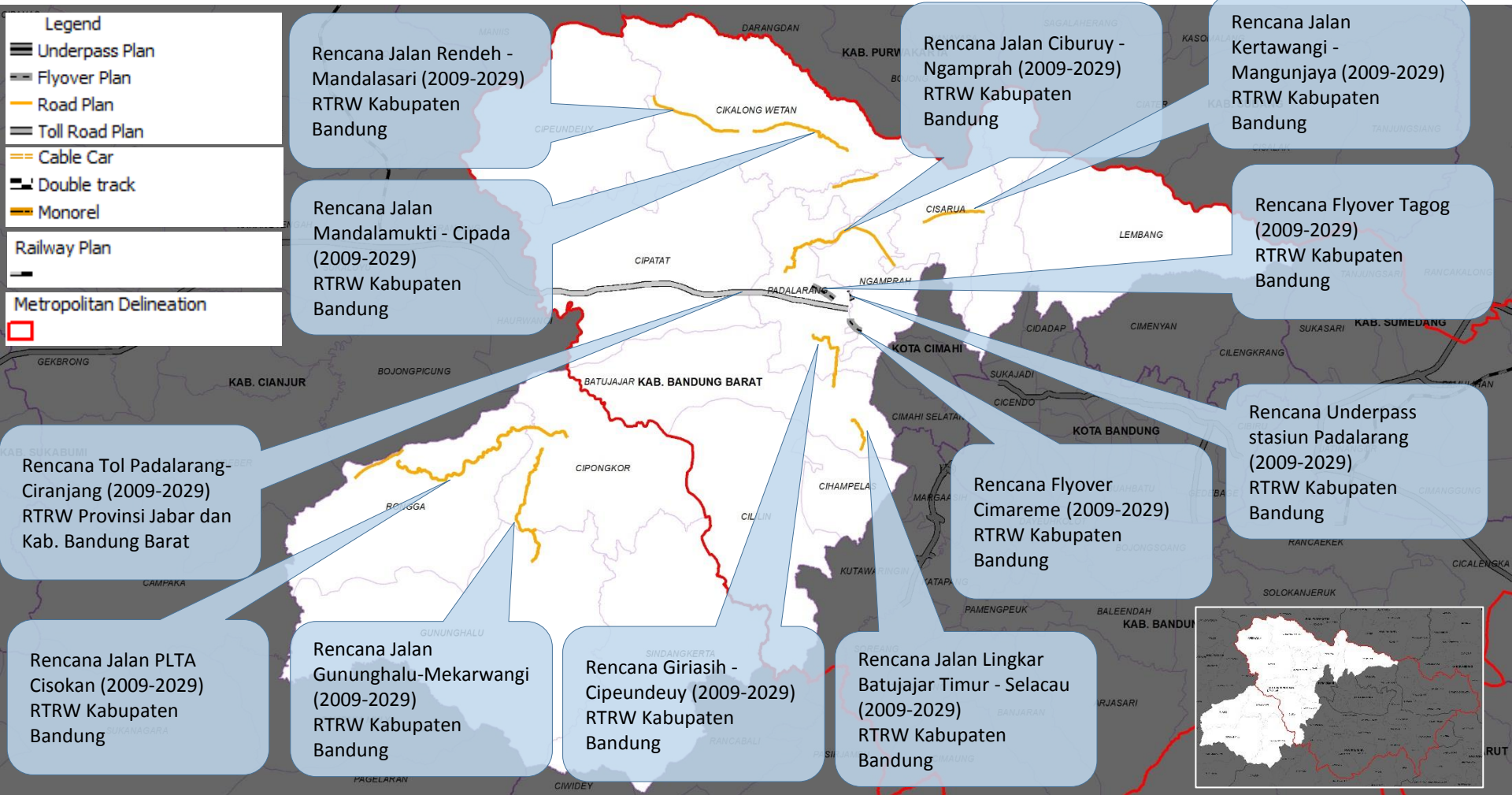
BANDUNG BARAT (KBB) REGENCY

Scale Bar

4.5 Km

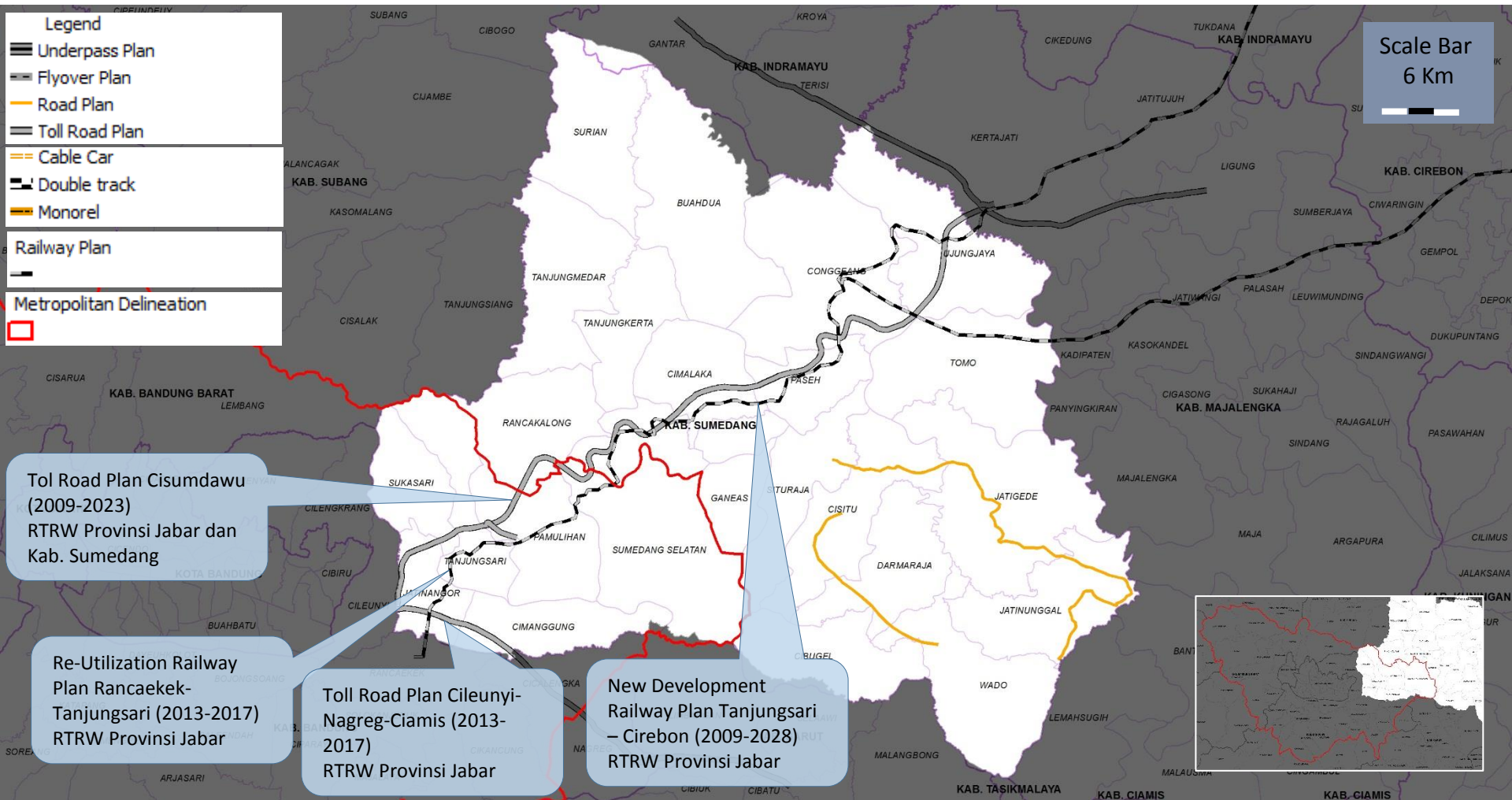
Legend

- Underpass Plan
- Flyover Plan
- Road Plan
- Toll Road Plan
- Cable Car
- Double track
- Monorel
- Railway Plan
- Metropolitan Delineation



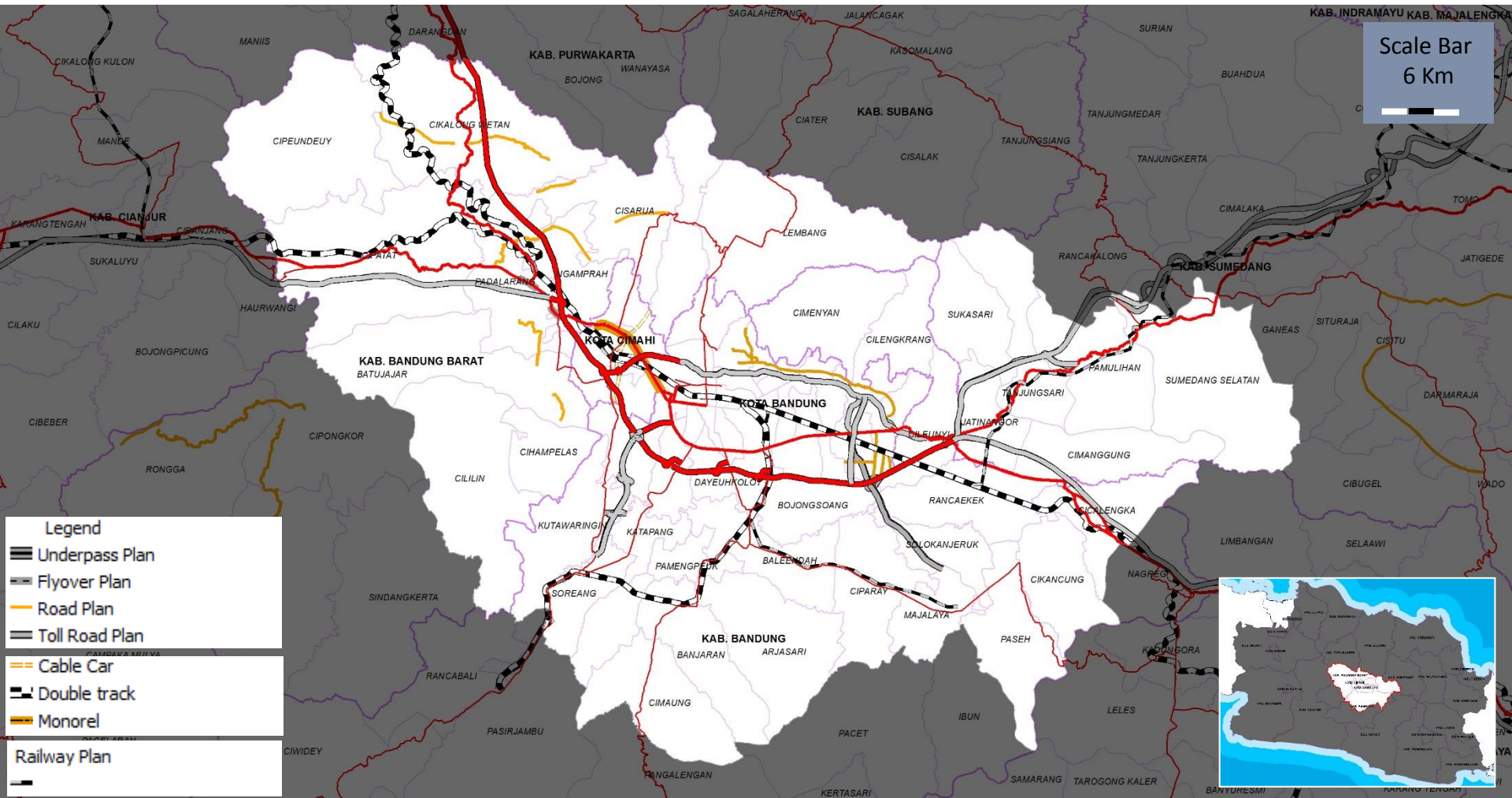
URBAN TRANSPORT DEVELOPMENT PLAN

GREATER BANDUNG METROPOLITAN SUMEDANG REGENCY



URBAN TRANSPORT DEVELOPMENT PLAN

GREATER BANDUNG METROPOLITAN



URBAN TRANSPORT DEVELOPMENT PLAN

STRATEGIC ROAD INFRASTRUCTURE DEVELOPMENT PLANS FOR GREATER BANDUNG METROPOLITAN

- Bandung Intra Urban Toll Road (BIUTR)
- Cileunyi – Sumedang – Dawuan (Cisumdawu) Toll Road
- Soreang – Pasirkoja (Soroja) Toll Road
- Toll Road segment Cileunyi – Nagreg (part of Cileunyi – Tasikmalaya – Banjar Toll Road)
- Gedebage – Majalaya Toll Road
- Interchange of Warung Domba Toll Road in Bandung Barat Regency
- Kopo and Buah Batu Fly Over in Bandung City
- Padasuka Fly Over in Cimahi City
- Cimareme Fly Over in Bandung Barat Regency
- Bandung – Lembang alternative road
- Sukasari road (Sumedang Regency) – Lembang (Bandung Barat Regency)
- Cileunyi – Rancaekek rapid transit road
- Ciwidey rapid transit road

STRATEGIC ROAD INFRASTRUCTURE DEVELOPMENT PLANS FOR GREATER BANDUNG METROPOLITAN

- Soreang – Katapang – Baleendah – Majalaya rapid transit road
- Majalaya rapid transit road
- Banjaran rapid transit road
- The development of other strategic roads based on the agreement between provincial government and local government Soreang – Katapang – Baleendah – Majalaya rapid transit road
- Majalaya rapid transit road
- Banjaran rapid transit road
- The development of other strategic roads based on the agreement between provincial government and local government
- Bandung Metropolitan Monorail
- Jakarta – Bandung – Kertajati - Cirebon High Speed Train
- Reactivation of Bandung – Tanjungsarui and Bandung – Ciwidey Railway Track
- Double Track and Electrification of Padalarang – Kiaracondong – Cicalengka Railway Track
- Development of strategic infrastructure based on the agreement between provincial government and local governments

**RULES AND
REGULATIONS**

POLITICAL

INSTITUTIONAL

TECHNICAL

SETTINGS NEEDED

LAW NO. 23/2007

ON RAILWAY/RAILROAD SYSTEM DEVELOPMENT

MAIN POINTS:

THE ROLE OF LOCAL GOVERNMENT

(Government Regulation No. 56/2009 and No. 72/2009)

4 IMPORTANT ASPECTS OF RAILWAY/RAILROAD SYSTEM DEVELOPMENT

(Structure | Infrastructure | Human Resources | Regulations)

3 NEW ASPECTS TO BE CONSIDERED

(Regulator vs. Operator | Private sector Involvement | Role sharing among different levels of Government)

RULES & REGULATIONS TO BE CONSIDERED

LAW NO. 23/2007

ON RAILWAY/RAILROAD SYSTEM DEVELOPMENT

KEY DIFFERENCES WITH PREVIOUS LAW AND REGULATION

LAW NO. 13/1992

CENTRALIZED SYSTEM |
NO SEPARATION BETWEEN REGULATOR AND
OPERATOR |
MONOPOLY BY PT. KAI

LAW NO. 23/2007

DECENTRALIZED SYSTEM |
ROLE SEPARATION BETWEEN REGULATOR
AND OPERATOR |
ROOM FOR MULTI-OPERATOR
(NO MONOPOLY)



INTEGRATED RAILWAY/RAILROAD SYSTEM
DEVELOPMENT IS REQUIRED
(RIPNAS | RIPDA PROVINSI | RIPDA KABUPATEN/KOTA)

RULES & REGULATIONS TO BE CONSIDERED

**NEW REGULATION TO SUPPORT PLANNING
IMPLEMENTATION:**

REGIONAL REGULATION (PERDA) No. 12 Year 2014
On Development Management for Metropolitan and
Growth Center in West Java

RULES & REGULATIONS TO BE CONSIDERED

POLITICAL SETTING

TO DEVELOP COMMITMENT AMONG POLICY MAKERS AND POLITICAL LEADERS

[through intensive meeting, dialogue, and discussion | resulted in legal commitment (eg. MoU) accepted by all]

INSTITUTIONAL SETTING

TO DESIGN GOVERNANCE STRUCTURE THAT ENSURE EFFECTIVE AND EFFICIENT POLICY IMPLEMENTATION AS WELL ESTABLISHED WAYS INSTITUTIONALIZED.

[identify policy relevant actors | examine and understand relation among policy relevant actors | taking into account cultural and structural element that affect interaction among actors]

TECHNICAL SETTING

TO PROVIDE TECHNICAL BASIS FOR POLICY AND PLANNING IMPLEMENTATION

[technical details | program indicators | development stages | etc.]

SETTINGS NEEDED

THANK YOU

johnny.patta@gmail.com

